

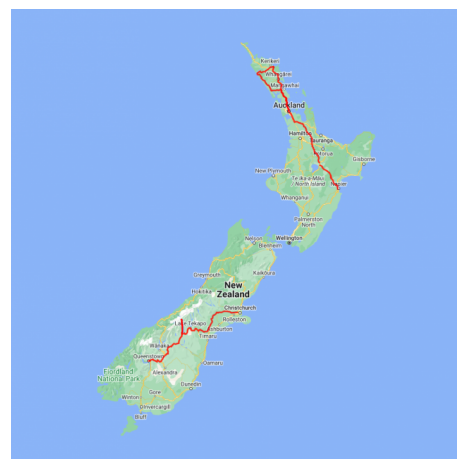


## Golfing Tour of New Zealand

New Zealand is home to nearly 400 golf courses and the majority of these welcome international guests for casual play. This 15 day tour of New Zealand takes you from the sub-tropical Bay of Islands in the north to the alpine resort of Queenstown in the South Island. Along the way you have an enticing range of courses to choose from. With many designed by well known heroes of the game including Sir Bob Charles and Jack Nicklaus or try one of the locals favourites like Muriwai Golf Course located on the rugged west coast of Auckland.

Starts in: Auckland  
Finishes in: Queenstown  
Length: 15days / 14nights  
Accommodation: Hotel 4 star  
Can be customised: Yes

This itinerary can be customised to suit you perfectly. We can add more days, remove days, change accommodations, mix it up, add activities to suit your interests or simply design and create something from scratch. Call us today to get your custom New Zealand itinerary underway.



### Inclusions:

Includes: Late model rental cars  
Includes: Fully inclusive rental car insurance (excess may apply)  
Includes: Unlimited kms  
Includes: GPS navigation  
Includes: Airport & ferry terminal rental car fees  
Includes: Additional drivers  
Includes: Comprehensive tour pack (detailed itinerary, driving instructions, map/guidebooks, brochures)  
Includes: 24/7 support while touring New Zealand  
Included activity: Private Transfer Auckland Airport to Auckland accommodation with Tourcorp  
Included activity: Electronic Travel Guide and In-Country Support App  
Included activity: Glacier Explorers  
Included activity: Huka Falls Jet Boat Ride  
14 breakfasts

## Day 1



### Private Transfer Auckland Airport to Auckland Accommodation

You will be met at the Auckland airport by the driver and transferred to your Auckland accommodation.

### Welcome to Auckland

Auckland, New Zealand's self-proclaimed "City of Sails" is the country's largest metro area. Resting between the Pacific Ocean and the Tasman Sea, this urban paradise has something for everyone. Surrounded by native bush, rainforests, and an abundance of beaches, Auckland is a playground for both the city savvy and those with an eye for adventure. Explore the central museums and galleries on foot, or get out onto the water to experience the best views of the city.

### SUGGESTED ACTIVITY - Harbour Sailing Dinner Cruise with Explore

This unique on-water sailing and dining experience is not to be missed while you're in Auckland. Enjoy smooth sailing on the Waitemata Harbour - then watch this photogenic city come alive with twinkling lights. Enjoy your meal as you sail around the beautiful Auckland Harbour taking in the view as the sun slowly sets. You'll be treated to canapes and a drink as you set off towards Westhaven Marina. Choose between dining in the downstairs cabin or on deck to take in the iconic sights of the Auckland Harbour. To finish the evening off, savour your dessert course as you leisurely sail back to Auckland's vibrant Viaduct Harbour.

### Your accommodation: SkyCity Hotel Auckland

This modern and spacious hotel allows you to relax in style while enjoying the world-class casino, more than 20 restaurants, cafes and bars, a theatre, free live entertainment on selected nights and the iconic Sky Tower - all right on your doorstep!



## Day 2



### Collect your rental car

This tour can be priced with any of the rental cars available in our fantastic range, from economy hatchbacks to prestige saloons and SUV's.

### SUGGESTED ACTIVITY - Muriwai Golf Club

Muriwai Golf Club is a links course situated in a protected bird sanctuary and famous for its Gannet colony. There are no encroaching buildings, no traffic sounds or large crowds. The only sound you'll hear are the calls of native birds and the surf breaking on the beach. The course is of naturally rolling fairways and breathtaking views of sea and forests from every hole. To play at Muriwai is to play as the game was meant to be played.

### SUGGESTED ACTIVITY - Formosa Golf Resort

Formosa Golf Resort is listed in The Finest Golf Clubs of the World and covers an area of 440 acres. The course has panoramic views of Waiheke Island and Rangitoto from its clifftop and coastal fairways. Designed by internationally renowned golfing professional, Bob Charles, the course features 18 holes of sensational golf.

### Your accommodation: SkyCity Hotel Auckland

This modern and spacious hotel allows you to relax in style while enjoying the world-class casino, more than 20 restaurants, cafes and bars, a theatre, free live entertainment on selected nights and the iconic Sky Tower - all right on your doorstep!

Meals included: Breakfast



## Day 3



### Auckland to Paihia, Bay of Islands

The trip from Auckland to the Bay Of Islands takes around 3.5 hours but give yourself some leeway for stops and sightseeing. As you go through Puhoi, take in the bohemian atmosphere of this historical township. Stop for a breath of fresh salty air in Whangarei and take another break at Kawakawa, home to the world famous Hundertwasser toilets. Enjoy the native bush surrounds and marvel at the endless golden beaches as you arrive into central Bay Of The Islands, Paihia.

---

### Your accommodation: Copthorne Hotel & Resort Bay of Islands

Copthorne Hotel & Resort Bay of Islands is located within the Waitangi Treaty grounds, surrounded by native bush and the beautiful Bay of Islands Harbour.

Meals included: Breakfast



---

## Day 4



### Explore the Bay of Islands

Commonly known as the 'winterless north'; New Zealand's Bay of Islands is made up of over 140 subtropical atolls. Renowned for its untouched beaches, abundant marine life and idyllic climate, this tropical paradise ticks all the boxes. Spend some time on a remote stretch of beach, or see the dolphins on an ocean safari. If diving is your thing, take the morning to descend the Rainbow Warrior - The Greenpeace flagship sunk by French saboteurs in 1985. Wander around Russell, a whaling port founded in 1843. Learn about our culture in historic Waitangi, the site where The Treaty of Waitangi was signed in 1840 between the Maori and European settlers dictating the terms by which New Zealand would become a British colony. Alternatively you may like to take a day tour to Cape Reinga, the very top of the North Island.

---

### SUGGESTED ACTIVITY - Waitangi Golf Club

The Waitangi Course not only provides an exciting and ever changing challenge to the golfer but also the most tremendous panorama of sea and island views over the Bay of Islands and Russell, river and estuary views over Waitangi and Opuia and rolling bush and forest views inland over Mount Bledisloe and Puketona.

These views are complemented by well groomed greens and fairways surrounded by areas of flowering native trees which provide sanctuary for many varieties of native birds. As many visiting golfers, particularly those from overseas, claim Waitangi is truly millionaires country for all to enjoy.

In 1932 the then Governor General of New Zealand, Lord Bledisloe and his wife Lady Bledisloe purchased just over one thousand acres of land on the Waitangi Peninsular and donated it to the inhabitants of New Zealand as a place of historic interest and recreational enjoyment for their benefit and use in perpetuity.

This land is known as the Waitangi National Trust and is now administered and managed under the terms of the original gift by the Waitangi National Trust Board. The Waitangi Golf Club leases the land on which the course has been developed from the Trust.

---

### SUGGESTED ACTIVITY - Kauri Cliffs Golf Course

Kauri Cliffs was designed and built by David Harman. The par 72 championship golf course measures 7,119 yards / 6,510 metres and offers five sets of tees to challenge every skill level. Fifteen holes view the Pacific Ocean, six of which are played alongside cliffs which plunge to the sea. The beautiful inland holes wind through marsh, forest and farmland. Kauri Cliffs is currently ranked #39 in the world by Golf Digest Top 100 Greatest Golf Courses in the World.

Kauri Cliffs recently underwent a renovation from world-renowned golf course architect Rees Jones. The 5th hole received a complete redesign and was transformed from a long, uphill, forced carry par-3 to a short "drop shot" par-3. Other notable changes were the addition of tees on the 2nd and 9th holes and a bunker renovation on the 4th hole. The golf complex includes a world-class practice range, putting and chipping greens, a well-stocked golf shop, and ladies' and men's locker rooms. Premium ladies' and men's rental clubs are available.



## Your accommodation: Copthorne Hotel & Resort Bay of Islands

Copthorne Hotel & Resort Bay of Islands is located within the Waitangi Treaty grounds, surrounded by native bush and the beautiful Bay of Islands Harbour.

Meals included: Breakfast



---

## Day 5



### Bay of Islands (Paihia) to Auckland via Waipoua Forest

Today you will leave the Bay of Islands for a scenic return trip to Auckland. Head west, leaving the Pacific Ocean for the wilder seas of the Tasman and Hokianga. Go through the small townships of Omapere and Opononi, each with a great seaside feel.

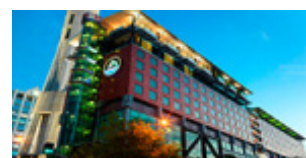
Your route now goes south through Waipoua Forest, home to the largest and oldest Kauri trees in the country. Make sure you allow time for several of the signposted short walks as you pass - not to be missed is the five minute loop to view the largest of all the trees - Tane Mahuta. As you make your way back down the country you'll pass the Matakohe Kauri Museum with extensive displays on the region's logging, farming and social history. Continuing on, go through Warkworth and the bohemian settlement of Puhoi before crossing the harbour bridge to arrive in Auckland city.

---

## Your accommodation: SkyCity Hotel Auckland

This modern and spacious hotel allows you to relax in style while enjoying the world-class casino, more than 20 restaurants, cafes and bars, a theatre, free live entertainment on selected nights and the iconic Sky Tower - all right on your doorstep!

Meals included: Breakfast



---

## Day 6



### Auckland to Taupo

Heading south from Auckland you'll go through the lush pastures of Waikato king country. Choose to bypass Hamilton or if you've got the time, stop in to visit the renowned Hamilton Gardens - a detour we highly recommend. Continue on, following the Waikato River through the small township of Cambridge to eventually arrive in Taupo, which sits on New Zealand's largest lake - Lake Taupo - and is actually a giant volcanic caldera.

---

## Huka Falls Jet Boat Ride

The Huka Jet is 30 minutes of pure fun and exhilaration, skimming close to cliffs, sliding past trees, feeling the adrenalin of full 360 degree spins. The excitement continues right up to the base of the foaming Huka Falls, where you get a spectacular water level view to New Zealand's most visited natural attraction. Nothing compares to watching 220,000 litres per second tumbling over the cliff face towards you.

The water from the mighty Huka Falls runs down the Waikato River through a series of Hydro Power Stations. You'll get a view of the Wairakei Geothermal Power Station in the comfort of a powerful Chevrolet V8 jet boat. This unique Geothermal Power Station uses underground geothermal activity to produce hot steamy water. The Waikato Rivers beautiful environment is varied and unique and is New Zealand's longest river flowing north from our largest lake, Lake Taupō.

## SUGGESTED ACTIVITY - Maori Rock Carving Cruise

Sit back and relax in luxury bean bags on board the yacht Barbary as you enjoy a scenic sail across Lake Taupo to the 10-metre high Maori rock art, only accessible by boat. You're guaranteed amazing photo opportunities as you experience one of life's postcard moments on this Maori tour. Glide across a smooth lake as you soak up the warming sun or go for a swim before you enjoy free light refreshments at the rock carvings. If you're looking for a little more activity you can help hoist the sails or take a turn at the wheel. Taupo's Maori rock carvings may look like the remains of a 1,000-year-old Maori village, but these rock carvings were created in the late 70s by local artists lead by John Randall. Duration of cruise is 2 to 2.5 hours.

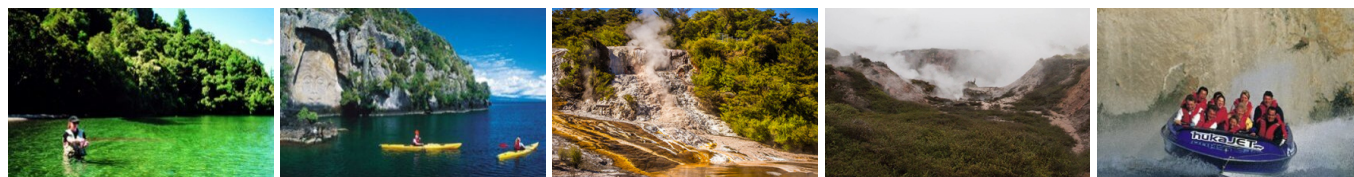
### Your accommodation: Millennium Hotel & Resort Manuels Taupo

Millennium Hotel & Resort Manuels Taupo enjoys a magnificent location right on the shores of Lake Taupo, New Zealand's largest lake.

Meals included: Breakfast



## Day 7



### Taupo

The town of Taupo sits on New Zealand's largest lake, Lake Taupo and this beautiful and serene body of water is reason enough to visit. The lake is actually a volcanic caldera formed following a massive eruption in the year 186 and is considered to be one of the most massive and violent eruptions known. Overlooking the lake are the cones of long extinct volcanoes, further evidence of the regions fiery past. To the south-west Mt. Ruapehu in the Tongariro National Park can be seen. The town itself is a lively place with many shops, bars and cafes all catering for the traveller and visitor.

A whole host of activities can be undertaken here such as bungy jumping, sky diving, fishing for trout in the lake and rivers, kayaking, sailing, horse riding and walking and hiking to name but a few.

Stop in at the quirky L'Arte Cafe and Gallery, home to the famous mosaic outdoor living room and the well-recognised 'Alice's Chair' sculpture.

Just to the north of the town centre is the Wairakei geothermal power station and a little further north is Craters of the Moon, a geothermal wonderland where you can explore colourful sulphurous lakes, bubbling mud pools and hot water geysers from the safety of boardwalks. The nearby Huka Falls are a spectacular sight and a jet boat ride will give you a very exciting ride to view the thundering water from below.

## SUGGESTED ACTIVITY - Kinloch Golf Course

Ranked in 2013 in the Top 100 in the World by Golf Course Architecture Magazine, The Kinloch Club was also rated on opening in 2007 as the top new golf course outside North America by the prestigious US Travel and Leisure Golf Magazine. The Golden Bear visited Kinloch to oversee construction of his signature Championship golf course and returned to The Kinloch Club in February of 2008 to play the course for the first time since completion. Jack was extremely happy with how his vision had come to fruition and was greatly impressed with the maturity of the golf course after it's 'grow in' stage. The Kinloch Club (Nicklaus signature golf course) is the only Nicklaus designed golf course in New Zealand.

### Your accommodation: Millennium Hotel & Resort Manuels Taupo

Millennium Hotel & Resort Manuels Taupo enjoys a magnificent location right on the shores of Lake Taupo, New Zealand's largest lake.

Meals included: Breakfast



## Day 8



## Taupo to Napier

The road from Taupo climbs high onto the plateau crossing the Ahiminawa Range before arriving onto the Pacific Coast just north of the world's finest art deco city of Napier.

Napier, the city by the sea, is renowned for its 1930s Art Deco architecture, events such as the Art Deco Weekend in February, stately Norfolk pines, surrounding wineries and local fresh produce. Supported by a Mediterranean climate and over 2,200 hours of sunshine a year this popular year-round destination boasts a vibrant cafe culture amongst the splendour of the Art Deco buildings. Around 30 cafes are within walking distance of the central city area, while Ahuriri, just over Bluff Hill, is home to a further cluster of up market establishments. Marine Parade overlooks the Pacific Ocean and out towards Cape Kidnappers, home to the world's largest mainland gannet colony. A full day can be taken visiting Ocean Spa hot pools and swimming complex, the Hawke's Bay Museum and the National Aquarium of New Zealand.

A landmark of Napier is Bluff Hill, which is home for many Napier residents and provides views of the town, beaches of Perfume Point and Westshore and out towards Whirinaki. Bluff Hill also overlooks the Port of Napier, one of New Zealand's busiest ports, transporting timber, local fruit and meat products to worldwide destinations.

In 1931, New Zealand's greatest natural disaster struck Hawke's Bay. At 10.47am on Tuesday February 3rd, an earthquake of magnitude Richter 7.8 struck. In a minute and a half, in two separate shocks, the centre of Napier was almost totally destroyed. Fires quickly broke out and reduced to ashes or gutted what the tremors had left standing. Damage in Hastings was also devastating, although the fires were contained. Wairoa and the smaller towns to the south as far as Dannevirke were affected. There were 258 deaths, 162 in Napier, 93 in Hastings and 3 in Wairoa along with many injuries. The reconstruction of Napier and Hastings were costly but the benefit was two modern cities and the Ahuriri Lagoon, or Inner Harbour as it was usually known, was raised over 2 metres, creating the land, which Napier desperately needed to expand.

---

## Walking tracks in and around Hawkes Bay

There are some excellent walks in and around the Hawkes Bay region. The information below is provided by the Department of Conservation. Listed below are a selection of short walks but check with the Department of Conservation information centre for weather conditions, track suitability and conditions first. Tangoio Falls Scenic Reserve Tracks

Discover Te Ana or Tangoio Falls on a short, easy walk suitable for kids, or take a longer walk through native bush on the Tangoio Walkway. . Distance: 2 - 4.4 km one way. Completion Time: 30 minutes to 2 hours depending on which track you choose.

### White Pine Bush Scenic Reserve

Experience New Zealand's remaining coastal forest on these short, easy walks that are good for children.

Distance: 1.6 km loop. Completion Time: 40 minutes.

### Ahuriri Estuary

View a community of wading birds, fish, mud dwellers and aquatic plant life from the estuary track and boardwalk. Over 70 species of resident and migratory waterbirds use the estuary as a feeding and resting area.

Distance: 2.8 km one way. Completion Time: 1 hour.

### Te Mata Park

Te Mata Park has a rich human and geological history, and is home to a range of unique plants and native birds. The park has five different walking options varying in difficulty and distance.

Distance: 1.3 km - 5.4 km. Completion Time: 40 minutes - 1 hours 15 minutes.

### Lake Tūtira

There are two main walks at Lake Tūtira, a short walk along the edge of the lake or a longer loop through the reserve. Both offer great views of the lake as well as native and introduced plant species.

Distance: 1.3 km - 5.4 km. Completion Time: 40 minutes - 1 hours 15 minutes.

### Cape Kidnappers/Te Kauwae-a-Māui Walking Track

Follow the beach from Clifton to Cape Kidnappers/Te Kauwae-a-Māui alongside cliffs that show fragmented fault and tilt lines, recording the gradual rise of New Zealand. Black Reef is the first gannet nesting site, 7.5 km from Clifton. A 1 km climb takes you from the shelter on the beach to a benched area on the hill where you can view the second colony, and spectacular views of Hawke's Bay.

Distance: 19 km loop. Completion Time: 5 hour return.

---

## Your accommodation: Art Deco Masonic Hotel

The Art Deco Masonic Hotel occupies a significant historic building on Napier's waterfront and has been richly refurbished in keeping with the Art Deco architecture. With its central location and decadent décor, this is the best place to experience what Napier is famous for.

Meals included: Breakfast





## Day 9



### Explore Napier and the Hawke's Bay

With its Mediterranean climate and Art Deco style, Hawke's Bay is an attractive holiday prospect. As the nation's first winemaking region, a visit to one of its 30 wineries is a must. A trip to Mission Estate touted as the birthplace of NZ wine can't be missed. For the truly enthused head out on a tour of the vines. Those into Gatsby will enjoy the chance to view prominent Art Deco landmarks on a 1930s Vintage Car Tour. Passengers will spend just over an hour learning about the history of the city's architecture including the Napier Municipal Theatre, one of the top ten Art Deco Buildings in the world. If you're after some fresh air, hire a bike and take your pick of one of over 200km of cycling trails or head on down to one of the many beaches that ring the area. Ocean or Waimarama beach are good choices and both are patrolled by surf lifeguards during the summer. Indulge in some local produce and head out on a cheese, chocolate, honey or orchard tour. End on a high with another ride, this time in a comfortable trailer pulled by a tractor en-route to Cape Kidnappers Gannet Colony, the largest of its kind in the world.

---

### SUGGESTED ACTIVITY - Gannet Safaris

Drive along the scenic coast from Napier to Te Awanga and join Gannet Safaris Overland and the world's largest, most accessible gannet colony at Cape Kidnappers. Gannet Safaris has been guiding visitors over Cape Kidnappers for over 35 years and their safaris are the only way to be driven right to within a few feet of these remarkable birds. You will travel in comfort in air-conditioned 4 x 4 wheeled vehicles, through Cape Kidnappers Station - traversing riverbeds, broad rolling pastures, stands of native bush, steep gullies and breath-taking inclines. There is a stop on the way at a spectacular cliff top with panoramic views of Hawke Bay right across to Mahia peninsular. The 36km, three hour trip includes a commentary by your tour guide/driver on the farming operation on Cape Kidnappers Station and an introduction to the gannets. On arrival at the gannets you can stretch your legs and take in the scenery from your position at the brink of the cliff's edge, 100 metres above the ocean!

---

### SUGGESTED ACTIVITY - Cape Kidnappers Golf Course

Designed by legendary golf architect Tom Doak, the Cape Kidnappers par 71 golf course measures 7,119 yards (6,510 meters) and will challenge golfers of all skill levels. Completed in 2004, our spectacular New Zealand golf course has been hailed as one of the great modern marvels in golf. Built on a ridge-and-valley landscape and with stunning sea views, Cape Kidnappers Golf Course plays high above the ocean atop dramatic cliffs.

With cliff-edge fairways perched 140 metres above sea level and with a surface that remains firm and fast, this course offers holes unlike anything you find elsewhere in the world. While every hole has a spectacular view of the Bay, some play cautiously alongside deep ravines as others intimidate golfers with deep cliff top bunkers and sheer drops off the very edge of the earth. The golf complex includes a world-class practice range, putting and chipping greens, a well-stocked golf shop, clubhouse and ladies' and men's locker rooms. Premium ladies' and men's rental clubs are available.

---

### SUGGESTED ACTIVITY - Grape Escape half day Hawke's Bay Wine tour

This wine tasting tour is designed for casual imbibers and wine aficionados. Meet like-minded people and share an appreciation of Hawke's Bay's fantastic wines. Taste great wines made with passion and learn of the areas unique growing conditions. Take home outstanding wines and wonderful memories. Join a fun filled wine tasting afternoon in the sun driving through absolutely stunning scenery. Meet like-minded people and share an appreciation of this region's fantastic wine. Visit four to five wineries and enjoy a cheese platter on the grounds of the Ngatarawa Vineyard beside the lily pond.

---

### SUGGESTED ACTIVITY - Native Icons Guided Tour in National Aquarium of New Zealand

The National Aquarium of New Zealand stretches along Napier's Marine Parade. It's home to a wide range of saltwater, freshwater, and land animal exhibits from New Zealand and around the world. Native Icon Guided Tour focuses on wonderful native icons including the Kiwi and Tuatara. It gives you the chance to view Kiwi in the wonderful nocturnal house where day turns into night. You will take a close look at Kiwi eggs, and learn about their quirky habits, favorite meals, and more. Tuatara can be tricky to spot - your guide will uncover the mysteries of New Zealand's 'living fossil' and then introduce you to the famous Little Penguins along with some of our other residents.

---

### SUGGESTED ACTIVITY - Little Penguin Close Encounter with National Aquarium of New Zealand

The National Aquarium of New Zealand stretches along Napier's Marine Parade. It's home to a wide range of saltwater, freshwater, and land animal exhibits from New Zealand and around the world. The Aquarium is one of the only places in New Zealand where you can have a Close Encounter with these entertaining little birds. Little Penguins are only found in New Zealand and South Australia. As part of your encounter, you'll also experience what goes on behind the scenes, discovering all about the day-to-day care of these character-filled little birds and taking part in hand-feeding them. Learn about their rescue and rehabilitation and also what you can do to help preserve this special species and their environment.

---

### Your accommodation: Art Deco Masonic Hotel

The Art Deco Masonic Hotel occupies a significant historic building on Napier's waterfront and has been richly refurbished in keeping with the Art Deco architecture. With its central location and decadent décor, this is the best place to experience what Napier is famous for.

Meals included: Breakfast



---

## Day 10



**SUGGESTED ACTIVITY - Air New Zealand flight Napier to Christchurch**

---

### Collect your rental car

This tour can be priced with any of the rental cars available in our fantastic range, from economy hatchbacks to prestige saloons and SUV's.

---

### Explore Christchurch City

Following the 2011 earthquake that razed its centre and much of the outlying suburbs, Christchurch is well into a billion-dollar makeover. In the middle of the Canterbury Plains, bordering the Pacific Ocean, New Zealand's newest city is an ideal gateway to exploring the middle of the South.

Go punting on the Avon River, take a historic tram ride, catch the gondola to the rim of an extinct volcano or do all three! See the world's only Cardboard Cathedral and for nature enthusiasts - wander the renowned Christchurch Botanic Gardens, or head to Oxford Terrace in the city to find a great spot to eat or drink.

Drive an hour in any direction to ski, mountain bike, wine taste, whale-watch, bungee jump or play golf. Take the winding Port Hills road to the French settlement of Akaroa and tour the vines in Waipara for an authentic New Zealand wine-tasting experience. &nbsp;

---

### SUGGESTED ACTIVITY - Akaroa Day Tour and Harbour Nature Cruise with Leisure Tours

Enjoy a full day tour to Akaroa with Canterbury Leisure Tours. You will travel the scenic route to Akaroa via Governors Bay, Gebbies Pass, Lake Forsyth and Little River. Stop for spectacular views over the Akaroa Harbour. You'll then take a two hour cruise through Akaroa Harbour for a chance to see this quaint French settlement from the sea as well as dolphins, penguins and seals. On the return journey to Christchurch you will visit the cheese factory at Barry's Bay and sample some of New Zealand's finest cheese.

Lunch at the popular waterfront restaurant 'Bully Hayes' is included offering a wide choice of New Zealand cuisine.

---

### Your accommodation: Peppers Clearwater Resort

Peppers Clearwater Resort is a waterfront property set within beautiful grounds overlooking the clear, shimmering Lake Kaikainui. All rooms offer either lake views or views of the championship fairways.

Meals included: Breakfast



---

## Day 11



### A second day to explore Christchurch City and surrounds

A relaxing way to spend your second day in Christchurch is with a day trip to the village of Akaroa or the wine growing region of Waipara. The historic French settlement of Akaroa sits on a picturesque harbour and is a beautiful place to relax, soak in its history and play in the harbour. Two of the most popular activities are the Akaroa Harbour nature cruise or swimming with the rare Hector's dolphin. If you prefer fresh mountain air and an adrenalin rush, Christchurch is a great base to explore the Southern Alps. Enjoy an early morning hot air balloon ride, or a full day Alpine Safari, with jet boating, a 4WD farm tour and the spectacular TransAlpine Scenic Train journey included.



## SUGGESTED ACTIVITY - Clearwater Golf Course

The par 72 championship course is home to the HSBC NZ PGA Championship. Designed by John Darby in consultation with New Zealand golfing legend, Sir Bob Charles, the course combines elements of links golf inspired by the great Scottish courses with parkland golf, more reminiscent of Florida. Playable year-round, the course meanders around a succession of spring-fed lakes and trout-filled streams, with uninterrupted views of the spectacular Southern Alps. There are five tee positions to suit players of all abilities.

### Your accommodation: Peppers Clearwater Resort

Peppers Clearwater Resort is a waterfront property set within beautiful grounds overlooking the clear, shimmering Lake Kaikainui. All rooms offer either lake views or views of the championship fairways.

Meals included: Breakfast



## Day 12



### Christchurch to Aoraki Mt Cook National Park

Today you'll drive through the heart of the South Island, crossing the vast Canterbury plains. Catch your breath in Geraldine before continuing through Fairlie. Ascending Burkes pass you'll come to the picturesque lakeside town of Tekapo.

Follow the road and take in the view of Aoraki Mt Cook (New Zealand's tallest mountain) from the shores of Lake Pukaki, known for its glacier fed turquoise blue colour. Continue along the lake to your final destination Mt Cook Village.

Please note: There are no food shops at Mt Cook, and dinner options are limited to one restaurant. If you wish to self-cater, you must stock up before arriving in Mt Cook, or make dinner reservations in advance.

### Glacier Explorers Mt. Cook

Experience 500 year old icebergs up-close on the Mt Cook terminal lake. The Glacier Explorers tour is the only one of its kind in New Zealand and one of only three in the world! Very few glaciers terminate into lakes and even fewer of them are accessible. See towering ice cliffs and floating icebergs from the safety of a specially designed boat. These boats provide a safe way to view unseen and inaccessible areas of New Zealand's largest glacier The Tasman.

### Your accommodation: Hermitage Hotel, Aoraki Wing Premium

The Hermitage Hotel ringed by magnificent snow-capped peaks of the Southern Alps, is a world-renowned tourist destination and has been an icon of superior accommodation and dining since 1884.

Meals included: Breakfast



## Day 13



### Aoraki Mt Cook National Park to Queenstown

Leaving the alpine region of Aoraki Mt Cook, you'll travel through the lakeside town of Twizel, then a little further to Omarama the gliding capital of New Zealand. Continue on over the Lindis Pass, one of New Zealand's highest roads with a summit of 971 metres. Arrive in the quaint village of Tarras, then continue on a short way to the historic Bendigo Reserve, one of Otago's original gold mining settlements.

Follow the road to Cromwell, and keep going through the sheer cliffs of the Kawarau Gorge towards Gibbston, one of New Zealand's premier wine growing regions. See the historic Kawarau Bridge where you can bungee jump or relax and watch others take the plunge. Approaching Queenstown, the Remarkables mountain range comes into view as you arrive into the adventure capital of New Zealand.

## SUGGESTED ACTIVITY - TSS Earnslaw cruise to Walter Peak including gourmet BBQ dinner and a farm tour

Enjoy a quintessential Kiwi experience, a delicious gourmet BBQ buffet meal and a farm demonstration in a stunning lakeside setting. Take in the stunning views of Lake Wakatipu and its surroundings as you cruise across the lake to the historic Walter Peak high country farm aboard the TSS Earnslaw Steamship.

Enjoy the ambience of the heart of the stately homestead while your Colonel's Homestead Restaurant chef prepares a gourmet BBQ dinner. Your seasonal menu includes an extensive selection of local New Zealand produce, including succulent meats and a selection of delicious vegetables and salads. Complete your meal with your choice of delicious desserts, New Zealand cheeses, tea and coffee. After dinner, watch the farm dogs in action with a sheep-herding demonstration and say hello to the other farm animals. Finally, cruise home under the southern stars and enjoy the fresh night air as the lights of Queenstown draw ever closer.

### Your accommodation: Millbrook Resort, Arrowtown

This 175 room boutique hotel is situated on 500 acres of golf course and grounds. Surrounded by mountains the resort offers everything you need but is also close enough to Arrowtown and Queenstown to enjoy the region to its fullest.

Meals included: Breakfast



## Day 14



### Explore Queenstown

Well-known as New Zealand's 'adventure capital', Queenstown is home to a range of adventures, from the world's first and most famous bungy jumps to jet boat thrills, white-water rafting, and skydiving. However, Queenstown offers far more than a fast-paced, action-packed holiday. Settled on the shores of beautiful Lake Wakatipu beneath a soaring panorama of the Remarkables Mountain Range, this alpine town is surrounded by a plethora of historic, gastronomic, and scenic wonders. Take a stroll through the beautiful lakefront parks and gardens, browse through market stalls on weekends, dine in wonderful al-fresco restaurants, or ride on the 100-year-old historic Steamship - TSS Earnslaw to Walter Peak Station. Take the Queenstown Gondola up to Bob's Peak and soak up the panoramic views of the magnificent lake and mountain ranges. And after all of that, if you do want the adrenaline rush, Queenstown is known for taking your pick from the Shotover Jet, Canyon Swing, Zipline, Luge, or Heli-ski.

### SUGGESTED ACTIVITY - Millbrook Golf Course

Set in a natural, alpine amphitheatre, against the backdrop of the Remarkables Mountain Range, the golf course at Millbrook exploits the dramatic terrain fully, delivering world-class golf. Designed by Sir Bob Charles and recently upgraded by Greg Turner, this 18 hole, par-72 championship course features 4 different tee positions for complete enjoyment at all levels of playing expertise.

### SUGGESTED ACTIVITY - Appellation Boutique Wine Tour

Experience a tasting journey through three of Central Otago's incredibly scenic and varying wine sub-regions; Gibbston, Bannockburn and Cromwell. Visit three boutique vineyards, tasting their unique cool climate wines and discover why the Central Otago region has become world-renowned in its own right.

Indulge at a fourth vineyard restaurant for a platter-style lunch, savouring the finest and freshest produce, accompanied with a wine flight. There will also be an opportunity to retrace history when you stroll through the charming historical settlement of Old Cromwell.

### SUGGESTED ACTIVITY - Over The Top Golf Fly-Drive-Putt

For the ultimate golf experience you can't go past a hole in one at 4,500 feet! From Queenstown take a scenic helicopter flight with Over The Top helicopters to the most spectacular golf range in the world. Landing at 4500 feet on top of the Southern Alps you'll find a unique par 3 golf experience with magnificent views of Queenstown and the surrounding mountains. You'll choose two T's from the four onsite for your own golfing adventure. The challenge includes nearest to pin, longest putt and longest drive and for maximum bragging rights - a hole in one. You'll have 5 balls and 1.5 hours so take your best shot!

### Your accommodation: Millbrook Resort, Arrowtown

This 175 room boutique hotel is situated on 500 acres of golf course and grounds. Surrounded by mountains the resort offers everything you need but is also close enough to Arrowtown and Queenstown to enjoy the region to its fullest.

Meals included: Breakfast



## Day 15



Your final morning in Queenstown before driving to the airport and catching your next flight

Depending on when your flight departs you might have time for one last Queenstown adventure before dropping your car off at the airport and catching your flight.

---



## Tour details

Departures:	Daily
Tour type:	Nationwide Self Drive
Starts:	Auckland
Finishes:	Queenstown
Tour length:	15
Accommodation:	Hotel 4 star
Car/transport type:	

---

## Included activities

Includes	All breakfasts
Includes	Private airport transfers
Includes	Air New Zealand Airfare Napier to Christchurch
Includes	Huka Falls Jet Boat Tour
Includes	Twilight Odyssey Progressive Dinner and Winery Tour
Includes	Glacier Explorers Tour, Mt Cook National Park

---

## Accommodation summary

Day 1	SkyCity Hotel Auckland
Day 2	SkyCity Hotel Auckland
Day 3	Copthorne Hotel & Resort Bay of Islands
Day 4	Copthorne Hotel & Resort Bay of Islands
Day 5	SkyCity Hotel Auckland
Day 6	Millennium Hotel & Resort Manuels Taupo
Day 7	Millennium Hotel & Resort Manuels Taupo
Day 8	Art Deco Masonic Hotel
Day 9	Art Deco Masonic Hotel
Day 10	Peppers Clearwater Resort
Day 11	Peppers Clearwater Resort
Day 12	Hermitage Hotel, Aoraki Wing Premium
Day 13	Millbrook Resort, Arrowtown
Day 14	Millbrook Resort, Arrowtown