

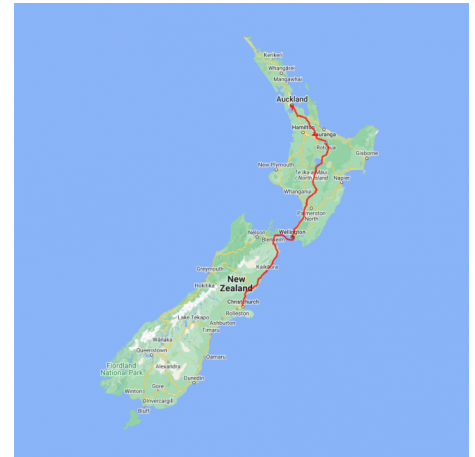


7 day Christchurch to Auckland Essential Highlights

Leaving the 'Garden City' of Christchurch travel north along the Pacific Coast visiting Kaikoura. Then onto Picton and across the Cook Strait to the capital city of Wellington. Travel north through the heart of the North Island exploring Taupo, Rotorua and even Hobbiton before arriving into Auckland.

Starts in: Christchurch
Finishes in: Auckland
Length: 7days / 6nights
Accommodation: Hotel 4 star
Can be customised: Yes

This itinerary can be customised to suit you perfectly. We can add more days, remove days, change accommodations, mix it up, add activities to suit your interests or simply design and create something from scratch. Call us today to get your custom New Zealand itinerary underway.



Inclusions:

Includes: Late model rental cars

Includes: Unlimited kms

Includes: Airport & ferry terminal rental car fees

Includes: Comprehensive tour pack (detailed itinerary, driving instructions, map/guidebooks, brochures)

Included activity: Private transfer Christchurch International Airport to your accommodation

Included activity: Interislander Ferry Picton to Wellington with exclusive access to the Premium Plus Lounge

Included activity: Te Pā Tū Evening Maori Cultural Experience - Dinner Included

: 6 breakfasts, 1 special dinner

Includes: Fully inclusive rental car insurance (excess may apply)

Includes: GPS navigation

Includes: Additional drivers

Includes: 24/7 support while touring New Zealand

Included activity: Electronic Travel Guide and In-Country Support App

Included activity: Huka Falls Jet Boat Ride

Included activity: Hobbiton Movie Set Tour



Day 1



Private transfer Christchurch International Airport to your accommodation

On arrival, you will be met by a private driver and transferred to your Christchurch accommodation.

Welcome to Christchurch City

Christchurch New Zealand's garden city is steadily being transformed into a vibrant urban destination. Encompassing a large green belt, it is known for its wide tree lined avenues and lush gardens. A great way to explore the city or easy way to see the sights or ride the historic trams across town to the renowned botanic gardens and the unique cardboard Transitional Cathedral, that's right it is built of cardboard!

SUGGESTED ACTIVITY - Discover Christchurch Afternoon Tour

A half day sightseeing tour of Christchurch highlighting both the damage to the city inflicted by several large earthquakes in 2010 and 2011 and the rebuild which is currently in progress, together with the surviving beauty of the city and the historical landmarks. Experience the grand architecture, beautiful gardens and scenic viewpoints on a half-day city tour of Christchurch.

The tour commences in the central city of Christchurch and covers the area which was completely devastated by the Christchurch earthquakes in February 2011. The guide will explain both the history of the city and the effects of the earthquake. On leaving the inner city, the tour travels to Mona Vale a historic homestead and gardens. Then you will travel to the Sign of the Takahe, a historic building with a lookout providing spectacular views over the city, Canterbury Plains and to the Southern Alps. The tour then travels via the Port Hills and Lyttelton Harbour by way of the Sign of the Kiwi and Governors Bay to the Port of Lyttelton. The tour proceeds through the Lyttelton harbour tunnel to the seaside suburb of Sumner and cave rock before returning to the central city where the tour will conclude.

Your accommodation: Distinction Hotel Christchurch

This luxury hotel is centrally located in the revitalised Cathedral Square in the heart of the city, a short stroll from the Avon River, Botanical Gardens, Christchurch Casino, Cashel Mall and new Christchurch Convention Centre.



Day 2



Collect your rental car

This tour can be priced with any of the rental cars available in our fantastic range, from economy hatchbacks to prestige saloons and SUV's.

Christchurch to Kaikoura

The drive north from Christchurch to Kaikoura takes you through the rolling hills of North Canterbury's major wine region, the Waipara Valley. Allow time for a detour and visit Hanmer Springs for a dip in the mineral hot pools. Continue on and cross the Hawkswood Range before descending to the spectacular Kaikoura coastline - where the road hugs the ocean for the last leg of the drive.

SUGGESTED ACTIVITY - Ocean's Cabin with Whale Watch Kaikoura

Experience New Zealand's only marine based whale watching company. Whale Watch Kaikoura offer a once-in-a-lifetime, up close encounter with the giant Sperm Whale. You are also likely to encounter New Zealand fur seals, dusky dolphins and albatross. Depending on the season you may also see pilot, blue and southern right whales as well as migrating humpbacks. Often orcas can be spotted here and the world's smallest dolphin, the Hector's, occasionally make an appearance.

Cruise in style on modern catamarans, specifically designed for whale watching, featuring large passenger cabins and outside viewing decks. Passenger numbers for each tour are kept below the vessel carrying capacity to ensure your tour experience remains a personal one.

Your accommodation: Bendamere House B&B

Bendamere House B&B has quality ensuite rooms, detached from the main house adding to the privacy and comfort, with superb views overlooking the Pacific Ocean and Seaward Kaikoura mountain range.

Meals included: Breakfast



Day 3



Kaikoura to Picton

Today follow the coast to Picton, located at the top of the South Island. As you leave Kaikoura you'll take in the spectacular shoreline and keep a lookout for native wildlife as you go. Stop to view adult fur seals at Ohau Point, and take a short stroll along the oceanside walkway. Continuing on, you'll have the ocean on one side and the Kaikoura ranges on the other before traversing the dry hills of Marlborough, New Zealand's largest wine-producing region. Visit one of the vineyards surrounding Blenheim for a wine tasting or a gourmet lunch before beginning the final leg of your journey to Picton.

Interislander Ferry Picton to Wellington with exclusive access to the Premium Plus Lounge

The 92 km journey between Picton and Wellington takes around 3 hours and has been described as 'one of the most beautiful ferry rides in the world'. Around one hour of the cruise takes you through the Marlborough Sounds. This region of bush covered mountains, small islands, crystal clear waters and secluded bays is a true photographic opportunity. From the Cook Strait spectacular views of the Kaikoura Ranges on the South Island can be enjoyed and dolphins and many sea birds are often seen. After crossing the strait you approach Wellington Harbour and pass many interesting points such as Pencarrow Head on top of which is New Zealand's oldest lighthouse (1859). Red Rocks is home to a seal colony and Oterangi Bay is the site which recorded the countries highest ever wind speed of 268 kph (167 mph).

When you're not out on the deck enjoying the amazing views, you can retreat to the exclusive premium plus lounge which is the most comfortable and relaxing way to travel across the Cook Strait. You'll enjoy complimentary beverages, light snacks, lunch or breakfast, internet access, magazines and newspapers and the most comfortable seating, so you can sit back and enjoy the journey.

Collect your rental car

This tour can be priced with any of the rental cars available in our fantastic range, from economy hatchbacks to prestige saloons and SUV's.

Wellington City

Wellington home to New Zealand's centre of government has a largely cosmopolitan feel. Often referred to as 'mini Melbourne', this (self-described) windy city is a melting pot of art, culture, food, and fashion. Quirky laneway bars, underground art shows, and hipster eateries make up its inner-city vibe, while a host of sandy beaches outside the urban bustle bring a cheerful holiday feel.

Head to Te Papa Museum for a history lesson and a ticket to one of its many international exhibitions or jump aboard the Wellington Cable Car at Lambton Quay - the only running funicular railway in the country. For those with an eye for boutique, fashion wander through Cuba St to sample some of the city's best vintage stores. Break for coffee at a hipster cafe and be sure to snap a pic outside the 'Beehive', New Zealand's parliamentary debate chamber.

Go behind the scenes at Weta Workshop Experience, the Oscar Award Winning design studio behind Lord Of The Rings, The Hobbit, and Avatar. If you're a foodie at heart, a two-hour round trip to Martinborough is a must-do. Take your time as you wind through spectacular wine country, and be sure to stop in at Martinborough Wines or Ata Rangi Martinborough. For an educational day out, learn about New Zealand's native species at Zealandia, the world's first fully-fenced eco-sanctuary and home to over 40 types of endangered and native birds.

SUGGESTED ACTIVITY - Zealandia By Night Wildlife Sanctuary Tour

Taking a night tour of Zealandia wildlife eco-sanctuary is an unforgettable experience and one that comes highly recommended. A conservation success and safe haven for some of New Zealand's rarest native animals, Zealandia is home to many remarkable species of birds, reptiles and insects living wild within a beautiful 225 hectare (one square mile) valley, just 10 minutes from the central city.

Your tour begins with an interactive exhibition before you walk through the gates of Zealandia predator-exclusion fence into the sanctuary. Your guide will then lead you on a torch-light walk through the native New Zealand bush. Possible sights include Kiwi foraging on the forest floor, tuatara hunting for food, glowworms shining, tiny Maud Island frogs in their enclosure, pateke (brown teal) ducks feeding at night and kaka (parrots) coming in to roost. Zealandia is one of the best places to see kiwi in the wild. Over 100 of these nocturnal birds live freely in their natural environment inside the safety of the sanctuary valley, so your chances of seeing one are high!

Your accommodation: Bolton Hotel Wellington

The Bolton Hotel offers contemporary apartment-style accommodation in the heart of Wellington. Just steps from the Parliament buildings and central business district, Bolton Hotel is conveniently close to the best of the city's shops, cafes and restaurants and is within walking distance of Wellington's vibrant waterfront.

Meals included: Breakfast



Day 4



Wellington to Taupo

The drive from Wellington to Taupo takes you via the Kapiti Coast and the seaside towns of Plimmerton, Paekakariki and Paraparaumu are worth a short detour. Heading north you pass through the rural towns of Taihape, Mangaweka and Bulls before arriving onto the central plateau. A little further the military town of Waiouru is home to the National Army Museum, an incredible collection of New Zealand's military history and a memorial to its servicemen. Skirting Tongariro National Park, one of New Zealand's three world heritage sites, you can see the 2,500 metre peak of the volcanically active Mt. Ruapehu. You might also recognise the symmetrical shape of Mt. Ngauruhoe as this was used as the scenery of Mt. Doom in the Lord of the Rings Trilogy. The town of Taupo sits on New Zealand's largest lake, Lake Taupo - a volcanic caldera formed following a massive eruption in the year 186, considered to be one of the most violent eruptions known. Just north of the town are the Huka Falls and a short detour to view is highly recommended. The Huka Jet can get you much closer with a thrilling jet boat ride. Nearby Craters of the Moon is a geothermal reserve with great walking tracks around its many boiling pools and steaming vents. Taupo is a lively place with many shops, bars and cafes all catering for the traveller and visitor. A whole host of activities can be undertaken here such as bungy jumping, sky diving, fishing for trout in the lake and rivers, kayaking, sailing, horse riding and walking and hiking to name but a few.

Huka Falls Jet Boat Ride

The Huka Jet is 30 minutes of pure fun and exhilaration, skimming close to cliffs, sliding past trees, feeling the adrenalin of full 360 degree spins. The excitement continues right up to the base of the foaming Huka Falls, where you get a spectacular water level view to New Zealand's most visited natural attraction. Nothing compares to watching 220,000 litres per second tumbling over the cliff face towards you.

The water from the mighty Huka Falls runs down the Waikato River through a series of Hydro Power Stations. You'll get a view of the Wairakei Geothermal Power Station in the comfort of a powerful Chevrolet V8 jet boat. This unique Geothermal Power Station uses underground geothermal activity to produce hot steamy water. The Waikato Rivers beautiful environment is varied and unique and is New Zealand's longest river flowing north from our largest lake, Lake Taupō.

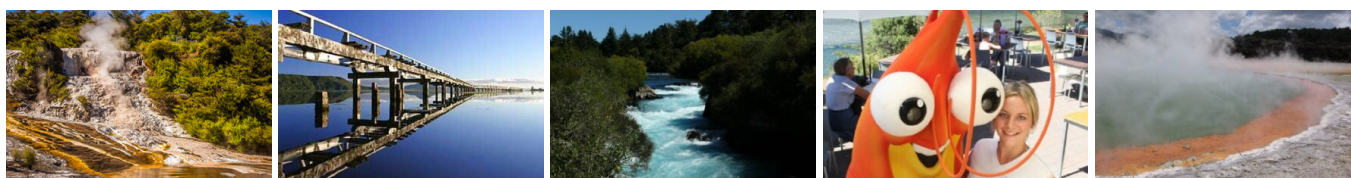
Your accommodation: Millennium Hotel & Resort Manuels Taupo

Millennium Hotel & Resort Manuels Taupo enjoys a magnificent location right on the shores of Lake Taupo, New Zealand's largest lake.

Meals included: Breakfast



Day 5



Taupo to Rotorua

The drive today takes you through the city of Rotorua, famous for its bubbling mud pools and Maori culture. Wai O Tapu Thermal Wonderland and the Waimangu Volcanic Valley are well signposted on the highway between the two towns. On Rotorua's lakefront Volcanic Air Safaris offer scenic flights over Mt. Tarawera, an impressive volcanic crater.

The Rotorua Museum and Blue Baths in the Government Gardens offer one of the best displays of any museum in the country. Focusing on local history the eruption of Mt. Tarawera in 1886 is brought to life.

Te Pā Tū Evening Maori Cultural Experience

New Zealand's Most Awarded Cultural Attraction, presenting Te Pā Tū. Feast on song, drama, tradition, and divine seasonal kai (cuisine) within the forest Pā (village) blanketed by towering Tawa trees, blazing bonfires, and a forest-formed amphitheatre. Te Pā Tū shares Māori history, traditions, and cultural aspirations across 4-hours of celebration and feasting. These events change with each season of the maramataka, the Māori lunar calendar.

SUGGESTED ACTIVITY - Wai-O-Tapu Thermal Wonderland

Wai-O-Tapu Thermal Wonderland is a spectacular showcase of New Zealand's most colourful and unique geothermal elements sculpted by thousands of years of volcanic activity. You are introduced to a uniquely different natural landscape – the key to what you see lies below the surface – one of the most extensive geothermal systems in New Zealand, extending over 18-sq. km. Enjoy viewing unique volcanic features as you walk at your own pace along well-defined tracks. Relax in the first-class Visitor Centre, home to the Gift Shop and Café facilities. Visit the Mud Pool, the largest in New Zealand, it was originally the site of a large mud volcano which was destroyed through erosion in the 1920s. See the history and beauty of the Lady Knox Geyser at 10:15 am every day. Lady Knox Geyser provides a unique opportunity to see an eruption to heights of 10 to 20 metres.

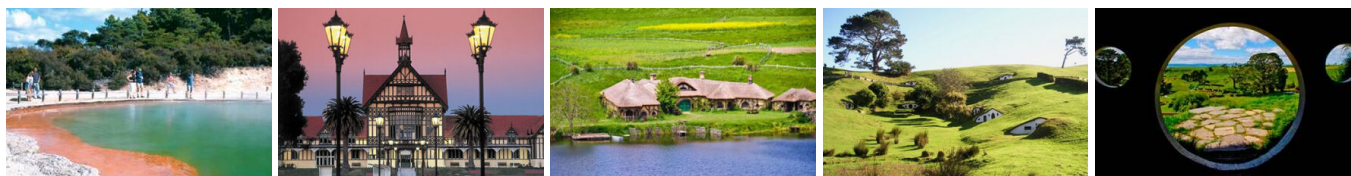
Your accommodation: Millennium Hotel Rotorua

Millennium Hotel is Rotorua's largest 4-star deluxe hotel. Perfectly situated in the heart of the city overlooking Lake Rotorua. Five levels of accommodation offer guests a wide variety of scenic views.

Meals included: Breakfast, Speciality Dinner



Day 6



Rotorua to Matamata

Leave the steaming vents and boiling pools of the geothermal region behind as you make your way through the lush dairy pastures of the Waikato. Take in the emerald green landscapes most famous for their role in the Lord of the Rings and Hobbit films. Arrive into the small town of Matamata, for a visit to the fully intact set of Hobbiton.

Hobbiton Movie Set tour from Shires Rest

Become immersed in the The Lord of the Rings and Hobbit films when you visit the actual Hobbiton movie set. Located just outside of Matamata in the heart of the lush Waikato farming region, your tour will begin with a drive through a picturesque sheep farm. You'll then be taken through Hobbit Holes, the Green Dragon Inn, the Mill and the Party Tree while your guide shares behind-the-scenes tales and insight into the making of the films. Spend time wandering through Bagshot Row before being led inside a Hobbit Hole to view the detailed interiors, designed to provide an authentic glimpse into the dwelling of a Hobbit.

Matamata to Auckland

Your drive continues north west crossing the dairy country of the Hauraki Plains before arriving at State Highway 1. The Bombay Hills guide you to Auckland City.

Your accommodation: M Social Hotel Auckland

A contemporary hotel for the curious, the explorers and those who thrive on new experiences. Functionally chic, this contemporary hotel overlooks the vibrant Princes Wharf that is home to a good array of dining, entertainment and shopping experiences.

Meals included: Breakfast



Day 7



SUGGESTED ACTIVITY - Harbour Sailing Cruise with Explore

Enjoy the City of Sails from the water on a relaxed harbour sailing yacht. This cruise offers a uniquely local experience experiencing the harbour under sail with a small vessel with an intimate and engaging atmosphere. View the stunning city sights while sailing on the inner Waitemata Harbour. Sail where the wind takes us while enjoying Auckland's city highlights; including sailing under the Harbour Bridge and other well-known landmarks along the harbour's edge. The crew's local knowledge will give you the best harbour sailing experience Auckland has to offer. Become the crew and help participate with the sailing experience take the helm while you carve through the water, or if you prefer just sit back and relax above deck.

Depart Auckland today

Explore more of vibrant Auckland city before dropping your rental car at the airport depot and continuing your onward journey.

Tour details

Departures:	Daily
Tour type:	Nationwide Self Drive
Starts:	Christchurch
Finishes:	Auckland
Tour length:	7
Accommodation:	Hotel 4 star
Car/transport type:	

Included activities

Includes	All breakfasts
Includes	Private airport transfers
Includes	Interislander ferry crossing
Includes	Hobbiton Movie Set Tour, Matamata
Includes	Lake Tarawera and the buried village by floatplane
Includes	Mitai Maori Village Concert & Buffet Dinner, Rotorua
Includes	Huka Falls Jet Boat Tour

Accommodation summary

Day 1	Distinction Hotel Christchurch
Day 2	Bendamere House B&B
Day 3	Bolton Hotel Wellington
Day 4	Millennium Hotel & Resort Manuels Taupo
Day 5	Millennium Hotel Rotorua
Day 6	M Social Hotel Auckland