



## The Central Highlights Walking Tour

Explore a variety of landscapes and natural wonders of the North Island on this short walking highlights tour. Begin with the idyllic Coromandel Peninsula with its white sandy beaches and lush forests. You then tackle one of the world's greatest one day hikes, the Tongariro Crossing. Located in the striking volcanic plateau of Tongariro National Park, a world heritage area of outstanding beauty. You'll also have time to discover the unique Maori culture in Rotorua and the fascinating limestone caves and glow worms of Waitomo.



Starts in: Auckland  
Finishes in: Auckland  
Length: 9days / 8nights  
Accommodation: Hotel 4 star  
Can be customised: Yes

This itinerary can be customised to suit you perfectly. We can add more days, remove days, change accommodations, mix it up, add activities to suit your interests or simply design and create something from scratch. Call us today to get your custom New Zealand itinerary underway.



### Inclusions:

Includes: Late model rental cars

Includes: Fully inclusive rental car insurance (excess may apply)

Includes: Unlimited kms

Includes: GPS navigation

Includes: Airport & ferry terminal rental car fees

Includes: Additional drivers

Includes: Comprehensive tour pack (detailed itinerary, driving instructions, map/guidebooks, brochures)

Includes: 24/7 support while touring New Zealand

Included activity: Private Transfer Auckland Airport to your Auckland Accommodation with Tourcorp

Included activity: Electronic Travel Guide and In-Country Support App

Included activity: Wilderness Adventure Walk with Kiwi Dundee - Lunch Included

Included activity: Te Pā Tū Evening Māori Cultural Experience - Dinner Included

Included activity: Sky Waka Gondola Sightseeing Trip with Whakapapa - Open Dated Voucher

Included activity: Private Guided Tongariro Alpine Crossing with Adrift

Included activity: Glow Worm Caves Tour with Discover Waitomo

: 8 breakfasts, 1 lunch, 1 dinner



## Day 1



### Private Transfer Auckland Airport to your Auckland Accommodation with Tourcorp

You will be met at the Auckland airport by the driver and transferred to your Auckland accommodation.

### Welcome to Auckland

Kia ora! Welcome to Auckland, known in Māori as Tāmaki Makaurau. Auckland is New Zealand's vibrant "City of Sails," and the country's largest metropolitan area. Nestled between the Pacific Ocean and the Tasman Sea, it offers something for everyone. Surrounded by native bush, lush rainforests, and pristine beaches, Auckland is a haven for both adventurers and urban explorers. Wander through world-class museums and galleries in the city centre or enjoy a peaceful retreat at the Auckland Gardens, where stunning landscapes showcase New Zealand's diverse flora. Stroll along the lively waterfront to savour fresh seafood and international cuisine at the Viaduct restaurants. For an unforgettable perspective, ascend the iconic SkyTower, New Zealand's tallest structure, and take in panoramic views of the city and its picturesque islands.

### SUGGESTED ACTIVITY - Wētā Workshop Unleashed

Explore worlds of horror, sci-fi and fantasy in the making. An exciting, realistic, and authentic experience, with three fully developed and original film concepts: A nail-biting horror Fauna, a fantasy epic Age of the Ever-Clan, and the mind-bending sci-fi Origins.

A 90-minute guided experience through fully themed environments, including immersive horror, fantasy, and sci-fi story worlds. Be immersed by a specially-created unique sweeping cinematic soundtrack, animatronic creatures, physical and digital interactives, hyper-realistic sculpted giants and characters, a horror house experience, and much more.

### SUGGESTED ACTIVITY - All Blacks Experience

See what it takes to make, shape and be an All Black. Experience first-hand the excitement and emotion of game day. Discover the stories behind some of world rugby's most famous players, moments, and matches.

This guided experience introduces you to the game of rugby including state-of-the-art displays combining sound, images, interactive technology, and hands-on activities. Discover New Zealand's deep passion for our national sport, experience the full force of the All Blacks haka, and tackle interactive zones where you can try out your kicking, catching, line-out, and accuracy skills against legendary All Blacks.

### Your accommodation: SkyCity Hotel Auckland

This modern and spacious hotel allows you to relax in style while enjoying the world-class casino, more than 20 restaurants, cafes and bars, a theatre, free live entertainment on selected nights and the iconic Sky Tower - all right on your doorstep!



## Day 2



### Collect Rental Car

Choose a car to best suit your needs from our fantastic rental car range. From compact economy, hatchbacks to prestige SUVs.

### Auckland to Pauanui

Leaving Auckland you will travel through rolling green Waikato countryside and across the Hauraki Plains. The drive will take you near the Firth of Thames, a haven for wildlife, in particular, the shorebirds at Miranda. Arriving in the historic gold town of Thames you then cross the Southern Coromandel Ranges and onto the scenic east coast of the peninsula, littered with white sandy beaches. The destination of Pauanui meaning "Big Paua" in Māori, lies at the mouth of the Tairua River on its south bank, directly opposite the larger town of Tairua.



## SUGGESTED ACTIVITY - Driving Creek Railway & Potteries - EyeFull Tower Tour

Driving Creek Railway and Potteries has become a Coromandel icon. The dream of Barry Brickell was to establish a pottery workshop on his land. Using a railway he would have access to the clay on the land and the pine kiln fuel. Over the next 15 years the railway developed until in 1990 it was finally licensed to carry fare paying passengers and ever since thousands of visitors have made the trip to Coromandel to experience this unique attraction. The 1 hour return train trip on the innovatively designed trains takes you through replanted native kauri forest and includes 2 spirals, 3 short tunnels, 5 reversing points and several large viaducts as it climbs up to the mountain-top terminus. The pottery is still producing and you can watch the artists at work as well as purchase items. It is important you read and understand the risks associated with this activity. For more information please see [here](#).

### Your accommodation: Grand Mercure Puka Park Resort

Puka Park Resort is situated on the eastern side of the Coromandel Peninsula. Nestled amongst 25 acres of New Zealand's most beautiful native bush this prestigious hideaway offers luxury and seclusion at its best.

Meals included: Breakfast



## Day 3



### Wilderness Adventure Walk with Kiwi Dundee - Lunch Included

This day is a challenging hiking journey into tranquil and remote pristine rainforest surrounded by giant rock faces, rugged volcanic peaks, and ancient Kauri, Rimu and Rata trees. Wonder at the world's largest tree ferns, crystal clear rivers and rock pools. Enjoy the fascinating history and learn about the flora and fauna within this magnificent forest.

Includes a picnic lunch to enjoy by the river or up in the mountains.

### Your accommodation: Grand Mercure Puka Park Resort

Puka Park Resort is situated on the eastern side of the Coromandel Peninsula. Nestled amongst 25 acres of New Zealand's most beautiful native bush this prestigious hideaway offers luxury and seclusion at its best.

Meals included: Breakfast



## Day 4



### Pauanui to Rotorua via Tauranga

Leaving Pauanui, head south to New Zealand's surfing mecca. In addition to lazing on the beach or surfing, Whangamata offers big game fishing, walking and mountain biking in native and exotic forests. Continuing on to Tauranga you will arrive into the harbourside city in the Bay of Plenty region. It hosts historic buildings like the Elms Mission Station, an 1847 Georgian-style home. A bridge over the harbour connects Tauranga to Mount Maunganui, a beach town with hot saltwater pools and an extinct namesake volcano with winding walking paths. Finally, you will arrive into the City of Rotorua. The regions geothermal activity becomes evident as you see steam rising from the roadside and surrounding hills. Considered the cultural centre for the Maori people, Rotorua is the ideal place to gain an insight into the history and culture. Visit the local museum located in the government gardens or the nearby Ohinemutu Village, the original site of the first Maori settlers in the area or enjoy a traditional Maori "Hangi" meal and a cultural performance. Of course, Rotorua is also a great place to enjoy many other activities including, fishing, 4WD trips, relaxing spa treatments, mountain biking, walking and hiking plus helicopter and float plane trips.

## Te Pā Tū Evening Māori Cultural Experience - Dinner Included

New Zealand's Most Awarded Cultural Attraction, presenting Te Pā Tū. Feast on song, drama, tradition, and divine seasonal kai (cuisine) within the forest Pā (village) blanketed by towering Tawa trees, blazing bonfires, and a forest-formed amphitheatre. Te Pā Tū shares Māori history, traditions, and cultural aspirations across 4-hours of celebration and feasting. These events change with each season of the Maramataka, the Māori lunar calendar.

### Your accommodation: Millennium Hotel Rotorua

Millennium Hotel is Rotorua's largest 4-star deluxe hotel. Perfectly situated in the heart of the city overlooking Lake Rotorua. Five levels of accommodation offer guests a wide variety of scenic views.

Meals included: Breakfast, Dinner



## Day 5



### Explore Rotorua

Peppered with natural hot springs, boiling mud pools and steaming geysers, Rotorua sits within one of the world's most active volcanic regions. Geothermal landmarks aside, this city of sulphur has a rich indigenous history. Home to several prominent Māori tribes, a visit to one of the Māori experiences should be high on your agenda, learn about the special meaning of pounamu-Greenstone with Mountain Jade, explore the geysers and arts of Te Puia or immerse in an evening with Te Pā Tū. An excursion to one of the area's wellness spas is also a must! Try the Polynesian Spa for an invigorating soak in its natural mineral hot springs, Wai Ariki offers an indulging and unwinding restorative journey or pay a quick visit to Secret Spot for a soak and a delicious smash burger!

If it is a thrill you are looking for, spike your adrenaline at Rotorua Canopy Tours, soaring above the ancient native forest below. Alternatively, head up the Skyline Rotorua Gondola for soaring lake views, and ride the luge at night for an extra thrill.

Make the most of your time in Rotorua with an excursion through the Wai-O-Tapu Thermal Wonderland, one of the area's most colourful volcanic attractions. Whatever you are after, Rotorua is almost certain to have it!

### SUGGESTED ACTIVITY - National Kiwi Hatchery Experience

The National Kiwi Hatchery Experience is a special opportunity to gain insight into and view this highly regarded conservation centre. Developed with the visitor experience in mind, the hatchery boasts special viewing opportunities and is hosted by kiwi expert guides who ensure guests leave fully informed and all questions answered. Learn all about New Zealand's intriguing national icon and the efforts of the kiwi husbandry team, see and discover what it takes to hatch and rare chicks, and if you're lucky see baby chicks in person!

### SUGGESTED ACTIVITY - Original Ziplining Experience with Rotorua Canopy Tours

Embark on a three-hour adventure through the native New Zealand forest. Journey through the beautiful forest canopy via an incredible network of trails, tree platforms, Ziplines and swing bridges. See breathtaking views of the woodland valleys and hills as you fly through tight openings in the trees. In between the thrill of the ziplines and suspended tree bridges, your guides will share their passion and knowledge for the forest and the conservation challenges to preserve it. It is important you read and understand the risks associated with this activity. For more information see [here](#).

### SUGGESTED ACTIVITY - Polynesian Spa Thermal Mud Polish & Aix Spa Massage

Rotorua's Polynesian Spa offers a unique thermal spa experience on the shore of Lake Rotorua. Voted a World Top Ten Spa (medical and thermal spas) by readers of the prestigious Conde Nast Traveller magazine 2004-2007, this is the ultimate in relaxation and regeneration. Begin your spa treatment with a pre-therapy soak in the deluxe lake spa. Enjoy tranquil bathing and lake views in four shallow alkaline rock pools, each with different temperatures (36°C to 42°C). Here you are surrounded by revitalising native New Zealand flora, natural rocks, the sound of two waterfalls and a grotto. The pools are filled with soothing alkaline mineral water leaving your skin soft and supple. You will then be treated to the popular 'mud massage' a signature service of Polynesian Spa. Your therapist will exfoliate your body with the unique Rotorua mud polish to remove dry skin. You'll then rinse off the polish under a warm shower followed by a massage using organic coconut oil while the water is running, leaving your skin feeling soft and hydrated and your body relaxed. You can then return to the deluxe lake spa for a post treatment soak.

## SUGGESTED ACTIVITY - Wai-O-Tapu Thermal Wonderland

Wai-O-Tapu Thermal Wonderland is a spectacular showcase of New Zealand's colourful and unique geothermal elements sculpted by thousands of years of volcanic activity. You will be introduced to a diversely different natural landscape, extending over 18-sq. km. Enjoy viewing the volcanic features as you walk at your own pace along well-defined tracks. Relax in the first-class Visitor Centre, home to the Gift Shop and Café facilities. Visit the Mud Pool, the largest in New Zealand, it was originally the site of a large mud volcano which was destroyed through erosion in the 1920s. See the history and beauty of the Lady Knox Geyser at 10:15 am every day where a daily eruption happens of up to 20 metres.

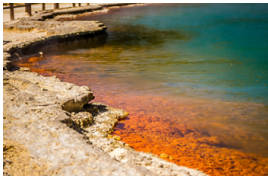
### Your accommodation: Millennium Hotel Rotorua

Millennium Hotel is Rotorua's largest 4-star deluxe hotel. Perfectly situated in the heart of the city overlooking Lake Rotorua. Five levels of accommodation offer guests a wide variety of scenic views.

Meals included: Breakfast



## Day 6



### Rotorua to Waimarino-National Park

Today you'll drive from Rotorua to Tongariro National Park along the thermal highway. Pass through Taupo and be sure to check out the Wai O Tapu Thermal Wonderland or Waimangu Volcanic Valley both well worth a visit if you can spare the time. Visit the Huka Falls, New Zealand's largest volume of water or take in the boiling mud pools and steam vents as you wander the nearby geothermal reserve, Craters of the Moon. Continue on to the township of Turangi, known as one of the world's best trout fishing locations before emerging out into Tongariro National Park. Enter the small village Waimarino and enjoy the beautiful scenery that surround it.

## SUGGESTED ACTIVITY - Huka Falls Jet Boat Ride

The Huka Jet is 30 minutes of pure fun and exhilaration, skimming close to cliffs, sliding past trees, feeling the adrenalin of full 360 degree spins. The excitement continues right up to the base of the foaming Huka Falls, where you get a spectacular water level view to New Zealand's most visited natural attraction. Nothing compares to watching 220,000 litres per second tumbling over the cliff face towards you.

The water from the mighty Huka Falls runs down the Waikato River through a series of Hydro Power Stations. You'll get a view of the Wairakei Geothermal Power Station in the comfort of a powerful Chevrolet V8 jet boat. This unique Geothermal Power Station uses underground geothermal activity to produce hot steamy water. The Waikato Rivers beautiful environment is varied and unique and is New Zealand's longest river flowing north from our largest lake, Lake Taupō.

## Sky Waka Gondola Sightseeing Trip with Whakapapa - Open Dated Voucher

During the summer months you can take advantage of the skifield facilities and take the gondola over Mt Ruapehu's otherworldly terrain. You'll travel to an altitude of 2020 metres where you'll be treated to magnificent views of Tongariro National Park, including the iconic peaks of Mt Ruapehu, Mt Tongariro and Mt Ngauruhoe, the latter featured as Mt Doom in the Lord of the Rings movies.

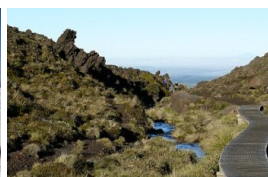
### Your accommodation: The Park Hotel Ruapehu

Located in the centre of National Park and is the ideal base for exploring New Zealand's Tongariro Crossing. The on-site Spiral Restaurant & Bar is full of character and is open daily. The outdoor hot tubs, courtyard hammocks & open fireplaces are complimentary for guests and offer the perfect opportunity to relax and unwind after a day of adventure in the Ruapehu region.

Meals included: Breakfast



## Day 7





## Private Guided Tongariro Alpine Crossing with Adrift

For the exclusive guided trips you'll be provided with a really personal, informative and friendly day you will never forget. This trip is tailored so that group sizes are small, your guides are well informed and are able to provide you with an amazing experience. Your guide will also 'work behind the scenes' constantly assessing the weather and track conditions, timing for your Ketetahi personalised transport pick-up at the end of your hike, and other little details that will maximise your enjoyment. They can also tailor the trip to accommodate different fitness levels and know a few tricks about avoiding weather exposed or crowded areas. It is important you read and understand the risks associated with this activity. For more information see [here](#).

### Your accommodation: The Park Hotel Ruapehu

Located in the centre of National Park and is the ideal base for exploring New Zealand's Tongariro Crossing. The on-site Spiral Restaurant & Bar is full of character and is open daily. The outdoor hot tubs, courtyard hammocks & open fireplaces are complimentary for guests and offer the perfect opportunity to relax and unwind after a day of adventure in the Ruapehu region.

Meals included: Breakfast, Lunch



## Day 8



### Waimarino-National Park to Waitomo

Head through National Park and across rich rolling farmland to the limestone regions of Waitomo and the famous Waitomo Caves complex. As you drive North you will soon leave behind the mountains wilderness of the Tongariro National Park and head into the rolling green hills of the Waikato region.

### Glow Worm Caves Tour with Discover Waitomo

Explore a 30 million year old cave network spread across three levels. You'll travel deep underground through the limestone caves viewing stalactites and stalagmites as well as hearing about the caves historical and geological significance. You'll then hop into a boat and glide silently through the glow worm grotto - a galaxy of tiny living lights.

### Waitomo to Auckland City

The lush farmland of the Waikato and the limestone hills of the Waitomo region provide some great scenery as you head north. Visit the Otorohanga Kiwi House en route for a great look at some of New Zealand's native birds in particular our famous flightless namesake.

### Your accommodation: SkyCity Hotel Auckland

This modern and spacious hotel allows you to relax in style while enjoying the world-class casino, more than 20 restaurants, cafes and bars, a theatre, free live entertainment on selected nights and the iconic Sky Tower - all right on your doorstep!

Meals included: Breakfast



## Day 9



### Depart Auckland today

Explore more of vibrant Auckland city before dropping your rental car at the airport depot and continuing your onward journey.

### Farewell from Aotearoa-New Zealand

Bid farewell to New Zealand, taking with you unforgettable memories of its breathtaking landscapes and incredible adventures. In Maori, it is said mā te wā, which is not goodbye, it is see you soon!

## Tour details

Departures:	Daily
Tour type:	North Island Self Drive
Starts:	Auckland
Finishes:	Auckland
Tour length:	9
Accommodation:	Hotel 4 star
Car/transport type:	

---

## Included activities

Includes	All breakfasts
Includes	Private airport transfers
Includes	Mitai Maori Village Concert & Buffet Dinner, Rotorua
Includes	Footwhistle Glow Worm Caves Tour
Includes	Kiwi Dundee nature and coast day tour
Includes	Private Tongariro Alpine Crossing with Adventure Outdoors

---

## Accommodation summary

Day 1	SkyCity Hotel Auckland
Day 2	Grand Mercure Puka Park Resort
Day 3	Grand Mercure Puka Park Resort
Day 4	Millennium Hotel Rotorua
Day 5	Millennium Hotel Rotorua
Day 6	The Park Hotel Ruapehu
Day 7	The Park Hotel Ruapehu
Day 8	SkyCity Hotel Auckland