



Discover New Zealand

Explore the length of New Zealand on this comprehensive tour of both the North and South Islands. In the north you'll explore the tropical Bay of Islands and the boutique wine region of Matakana as well as the cultural hotspot of Rotorua. After cruising across the Cook Strait to the South Island discover the wildlife mecca of Kaikoura, before continuing south to the snow-capped mountains, alpine lakes and glaciers of the lower South Island. Highlights of the south include the world renowned TranzAlpine scenic train journey and a voyage of discovery in Milford Sound.

Starts in: Auckland
Finishes in: Christchurch
Length: 23days / 22nights
Accommodation: Boutique Lodges & Hotels
Can be customised: Yes

This itinerary can be customised to suit you perfectly. We can add more days, remove days, change accommodations, mix it up, add activities to suit your interests or simply design and create something from scratch. Call us today to get your custom New Zealand itinerary underway.



Inclusions:

Includes: Late model rental cars

Includes: Unlimited kms

Includes: Airport & ferry terminal rental car fees

Includes: Comprehensive tour pack (detailed itinerary, driving instructions, map/guidebooks, brochures)

Included activity: Private Transfer Auckland Airport to Auckland accommodation with Tourcorp

Included activity: Dinner at Camp Estate, Larnach Castle

Included activity: Milford Sound Cruise and picnic lunch with RealNZ

Included activity: Private Transfer Christchurch Train Station to your accommodation

Included activity: Interislander Ferry Wellington to Picton

Includes: Fully inclusive rental car insurance (excess may apply)

Includes: GPS navigation

Includes: Additional drivers

Includes: 24/7 support while touring New Zealand

Included activity: Electronic Travel Guide and In-Country Support App

Included activity: Dinner at Camp Estate, Larnach Castle

Included activity: TranzAlpine Scenic Train: Greymouth to Christchurch

Included activity: Private transfer accommodation to Christchurch Airport

: 22 breakfasts, 1 lunch, 2 special dinners

Day 1



Private Transfer Auckland Airport to Auckland Accommodation

You will be met at the Auckland airport by the driver and transferred to your Auckland accommodation.

Welcome to Auckland

Auckland, New Zealand's self-proclaimed "City of Sails" is the country's largest metro area. Resting between the Pacific Ocean and the Tasman Sea, this urban paradise has something for everyone. Surrounded by native bush, rainforests, and an abundance of beaches, Auckland is a playground for both the city savvy and those with an eye for adventure. Explore the central museums and galleries on foot, or get out onto the water to experience the best views of the city.

SUGGESTED ACTIVITY - Harbour Sailing Cruise with Explore

Enjoy the City of Sails from the water on a relaxed harbour sailing yacht. This cruise offers a uniquely local experience experiencing the harbour under sail with a small vessel with an intimate and engaging atmosphere. View the stunning city sights while sailing on the inner Waitemata Harbour. Sail where the wind takes us while enjoying Auckland's city highlights; including sailing under the Harbour Bridge and other well-known landmarks along the harbour's edge. The crew's local knowledge will give you the best harbour sailing experience Auckland has to offer. Become the crew and help participate with the sailing experience take the helm while you carve through the water, or if you prefer just sit back and relax above deck.

Your accommodation: Fable Auckland

Located right on Queen Street the Fable Auckland is boutique and stylish property with an ideal location to enjoy and explore the vibrant heart of the 'City of Sails'.



Day 2



Collect your rental car

This tour can be priced with any of the rental cars available in our fantastic range, from economy hatchbacks to prestige saloons and SUV's.

Explore Auckland City

Perched on the edge of a large natural harbour, New Zealand's 'City of Sails' offers the best of both worlds. Sandy beaches, native bush and lush rainforests give way to a vibrant urban culture, humming with life. Spend time in the Viaduct Harbour, try your hand at sailing an America's Cup yacht or take the ferry to nearby Waiheke Island for a gourmet food and wine experience. Walk (if you're that way inclined) to the top of Auckland's highest volcano, Mt Eden, and take in soaring views of the gulf. Pack a picnic lunch and lose yourself in one of the 800 regional national parks on offer or grab a book and relax on a deserted beach. Head up the Sky Tower, standing at just over 300m tall (about 1,000 feet) and have a meal in the 360 degree revolving restaurant. Scale the outermost perimeter of the Harbour Bridge or test your stomach and bungy off both. To end your day, catch a cab to Ponsonby Road and sample some upmarket culinary delights.

SUGGESTED ACTIVITY - Waiheke Island Explorer Hop On Hop Off Tour

The most flexible tour on Waiheke Island, introducing you to the island's top spots! Start the tour of at Auckland harbor cruising on the ferry to reach Waiheke Island where you can hop on and off as much as you like at any of the 16 convenient stops which include vineyards, beaches and restaurants. If you prefer, stay on board and enjoy a 1 1/2 hour scenic tour of the island.

The buses stop at some of the island's iconic spots including Oneroa Village, Onetangi Beach, Batch Winery, the new Tantalus winery/brewery, Mudbrick Vineyard, Cable Bay Vineyard and more.

Knowledgeable tour drivers, and the addition of an on-board host, ensure you'll receive the most informative commentary as you travel around and you can get all the local tips and tricks for how best to enjoy Waiheke.

The Explorer Hop on Hop off departs from each hop on hop-off location approximately every 60 minutes throughout the day. At the end of the tour hop on the ferry and cruise the sparkling waters back to the Auckland harbor.

SUGGESTED ACTIVITY - All Blacks Experience

See what it takes to make, shape and be an All Black. Experience first-hand the excitement and emotion of game day. Discover the stories behind some of world rugby's most famous players, moments and matches.

This guided experience introduces you to the game of rugby before being lead through state-of-the-art displays combining sound, images, interactive technology and hands-on activities. Discover New Zealand's deep passion for our national sport, experience the full force of the All Blacks haka, tackle interactive zones where you can try out your kicking, catching, line-out and accuracy skills against legendary All Blacks.

SUGGESTED ACTIVITY - Wētā Workshop Unleashed

Explore worlds of horror, sci-fi and fantasy in the making. An exciting, realistic, and authentic experience, with three fully developed and original film concepts: A nail-biting horror Fauna, a fantasy epic Age of the Ever-Clan, and the mind-bending sci-fi Origins.

A 90-minute guided experience through fully themed environments, including immersive horror, fantasy, and sci-fi story worlds. Be immersed by a specially-created unique sweeping cinematic soundtrack, animatronic creatures, physical and digital interactives, hyper-realistic sculpted giants and characters, a horror house experience, and much more.

Your accommodation: Fable Auckland

Located right on Queen Street the Fable Auckland is boutique and stylish property with an ideal location to enjoy and explore the vibrant heart of the 'City of Sails'.

Meals included: Breakfast



Day 3



Auckland to Paihia, Bay of Islands

The trip from Auckland to the Bay Of Islands takes around 3.5 hours but give yourself some leeway for stops and sightseeing. As you go through Puhoi, take in the bohemian atmosphere of this historical township. Stop for a breath of fresh salty air in Whangarei and take another break at Kawakawa, home to the world famous Hundertwasser toilets. Enjoy the native bush surrounds and marvel at the endless golden beaches as you arrive into central Bay Of The Islands, Paihia.

Your accommodation: Arcadia Lodge, Russell

Arcadia Lodge is a Russell landmark, a turn of the century home and luxury bed and breakfast overlooking Russell's tranquil Matauwhi Bay.

Meals included: Breakfast



Day 4



Explore the Bay of Islands

Commonly known as the 'winterless north', New Zealand's Bay of Islands is made up of over 140 subtropical atolls. Renowned for its untouched beaches, abundant marine life and idyllic climate, this tropical paradise ticks all the boxes. Spend some time on a remote stretch of beach, or see the dolphins on an ocean safari. If diving is your thing, take the morning to descend the Rainbow Warrior - The Greenpeace flagship sunk by French saboteurs in 1985. Wander around Russell, a whaling port founded in 1843. Learn about our culture in historic Waitangi, the site where The Treaty of Waitangi was signed in 1840 between the Maori and European settlers dictating the terms by which New Zealand would become a British colony. Alternatively you may like to take a day tour to Cape Reinga, the very top of the North Island.

SUGGESTED ACTIVITY - Cape Reinga Scenic Aeroplane Flight and Guided Tour

Today experience the beauty of the North from both air and land. Take a spectacular scenic flight to Cape Reinga over Whangaroa Harbour and the Rangaunu Harbour as well as Coopers Beach, Doubtless Bay and Ninety Mile Beach. The tour also includes a visit to the Cape Reinga lighthouse.

SUGGESTED ACTIVITY - Waitangi Treaty Grounds Guided Tour and Cultural Performance

Waitangi is one of New Zealand's most historic sites where the Treaty of Waitangi was signed in 1840 between the local Maori and the British Government. This two day pass allows you access to the Treaty of Waitangi Grounds and includes admission to the Te Kōngahu Museum and Te Rau Aroha Museum and a Maori Cultural performance. During your guided tour, you'll learn about the history of the treaty and discover the stories and events that shaped New Zealand. The cultural performance inside the carved meeting house includes waiata (singing), poi, a display of Maori weaponry and the haka - a war dance New Zealand is well known for.

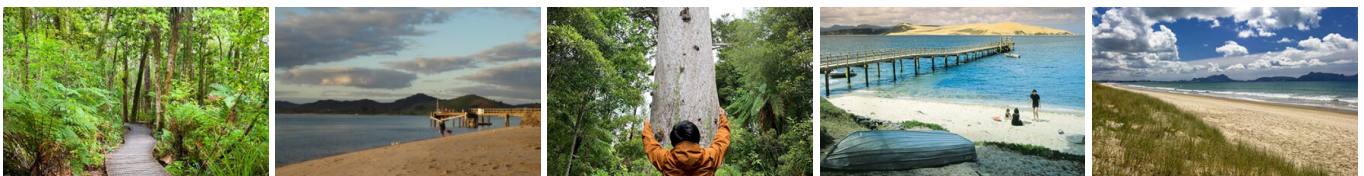
Your accommodation: Arcadia Lodge, Russell

Arcadia Lodge is a Russell landmark, a turn of the century home and luxury bed and breakfast overlooking Russell's tranquil Matauwhi Bay.

Meals included: Breakfast



Day 5



Bay of Islands to Waipoua Forest to Warkworth

Heading west from the Bay of Islands you leave the Pacific Ocean and soon arrive into the Hokianga and the wilder seas of the Tasman. The small townships of Omapere and Opononi have a great seaside feel and the perfect place to stop for an ice cream. The route now heads south and into the Waipoua Forest, home to the massive Kauri trees. Make sure you allow time to take a few short walks that are signposted as you pass through the region. Not to be missed is the 5 minute loop to view the largest of all the trees Tane Mahuta. Heading back across country the Matakōhe Kauri Museum is an award winning museum and has extensive displays of the regions logging, farming and social history. Just a short drive from Warkworth towards the coast is the small township of Matakana and a little further you will find the often deserted beaches of the Tawharanui Marine Reserve.

Your accommodation: Woodhouse Mountain Lodge Warkworth

Contemporary secluded villa accommodations in paradise-like grounds are set high above surrounding land, meaning privacy is guaranteed and views extend as far as the Hauraki Gulf. Our facilities include a restaurant, outdoor pool, sauna, day spa treatments, cocktail bar, and extensive grounds to explore.

Meals included: Breakfast



Day 6



Warkworth to Rotorua

Continuing south through Auckland, State Highway 1 quickly takes you into rolling green farmland and the rich dairy pasture of the Waikato. The Bombay Hills mark the outer boundary of great Auckland and its here you turn inland to central Waikato. This is hobbit country and the route takes you through the town of Matamata where you can still visit the film locations made famous in the Lord of the Rings trilogy at Hobbiton Movie Set and Farm Tours.

SUGGESTED ACTIVITY - Hobbiton Movie Set tour from Shires Rest

Become immersed in the The Lord of the Rings and Hobbit films when you visit the actual Hobbiton movie set. Located just outside of Matamata in the heart of the lush Waikato farming region, your tour will begin with a drive through a picturesque sheep farm. You'll then be taken through Hobbit Holes, the Green Dragon Inn, the Mill and the Party Tree while your guide shares behind-the-scenes tales and insight into the making of the films. Spend time wandering through Bagshot Row before being led inside a Hobbit Hole to view the detailed interiors, designed to provide an authentic glimpse into the dwelling of a Hobbit.

Your accommodation: The Springs Rotorua

The Springs is set in a simple yet elegant garden of roses and camellias evoking a sense of restful contentment. The Guest Wing, with four elegant rooms, is at the rear of the house ensuring a private, quiet stay.

Meals included: Breakfast



Day 7



Explore Rotorua

Peppered with natural hot springs, boiling mud pools and steaming geysers, Rotorua sits within one of the world's most active volcanic regions. Geothermal landmarks aside, this city of sulphur has a rich indigenous history. Home to several prominent Maori tribes, a visit to one of the Maori Villages should be high on your agenda, as should an excursion to the Polynesian Spa for an invigorating soak in its natural mineral hot springs.

Spike your adrenaline at Velocity Valley Adventure Park on stomach-dropping attractions such as static skydiving, or a giant swing reaching 130 km per hour. Alternatively, head up the Rotorua Gondola for soaring lake views, and ride the luge at night for an extra thrill.

Fans of Lord of the Rings and The Hobbit should drive to nearby Matamata and experience the actual movie set 'Hobbiton'. Make the most of your time in Rotorua with an excursion through the Wai-O-Tapu Thermal Wonderland, one of the area's most colourful volcanic attractions.

SUGGESTED ACTIVITY - National Kiwi Hatchery Tour

The National Kiwi Hatchery Tour is a special opportunity to gain insight into and view this highly regarded conservation centre. Developed with the visitor experience in mind, the hatchery boasts special viewing opportunities and is hosted by kiwi expert guides who ensure guests leave fully informed and all questions answered. Learn all about New Zealand's intriguing national icon and the efforts of the kiwi husbandry team, see and discover what it takes to hatch and rare chicks, and if you're lucky see baby chicks in person!

SUGGESTED ACTIVITY - Te Puia: Te Rā Daytime Experience

Only a short hop from the Rotorua township you'll find Te Puia, known as New Zealand's living Māori cultural experience. Sprawling across 60 hectares of volcanic land, it's home to the world-renowned Pohutu Geyser, a live kiwi enclosure and more than 500 geothermal wonders. Shrouded in a continuous haze of steam, Te Puia has a dramatic and ethereal air.

As you're guided along the wooden walkways, thermal springs and boiling mud pools surround you on either side, while native ferns and flax can be seen in the forest ahead. Te Puia takes pride in keeping Māori traditions and craft alive and it is home to the New Zealand National Carving and Weaving Schools. You'll have the chance to watch these unique craftspeople working as they share their skills with the next generation.

Your accommodation: The Springs Rotorua

The Springs is set in a simple yet elegant garden of roses and camellias evoking a sense of restful contentment. The Guest Wing, with four elegant rooms, is at the rear of the house ensuring a private, quiet stay.

Meals included: Breakfast



Day 8



Rotorua to Wellington

The drive from Rotorua to Wellington takes you via the township of Taupo home to New Zealand's largest lake. Following the lakeshore South you'll pass Turangi and then ascend the central plateau onto the high country Rangipo Desert. Skirting the edge of Tongariro National Park, you'll reach the military town of Waiouru before descending through rich farmland and the rural towns of Taihape And Mangaweka. Follow the coast through Paraparaumu, Paekakariki and Plimmerton to arrive at your destination, Wellington.

SUGGESTED ACTIVITY - Zealandia By Night Wildlife Sanctuary Tour

Taking a night tour of Zealandia wildlife eco-sanctuary is an unforgettable experience and one that comes highly recommended. A conservation success and safe haven for some of New Zealand's rarest native animals, Zealandia is home to many remarkable species of birds, reptiles and insects living wild within a beautiful 225 hectare (one square mile) valley, just 10 minutes from the central city.

Your tour begins with an interactive exhibition before you walk through the gates of Zealandia predator-exclusion fence into the sanctuary. Your guide will then lead you on a torch-light walk through the native New Zealand bush. Possible sights include Kiwi foraging on the forest floor, tuatara hunting for food, glowworms shining, tiny Maud Island frogs in their enclosure, pateke (brown teal) ducks feeding at night and kaka (parrots) coming in to roost. Zealandia is one of the best places to see kiwi in the wild. Over 100 of these nocturnal birds live freely in their natural environment inside the safety of the sanctuary valley, so your chances of seeing one are high!

SUGGESTED ACTIVITY - Wai-O-Tapu Thermal Wonderland

Wai-O-Tapu Thermal Wonderland is a spectacular showcase of New Zealand's most colourful and unique geothermal elements sculpted by thousands of years of volcanic activity. You are introduced to a uniquely different natural landscape – the key to what you see lies below the surface – one of the most extensive geothermal systems in New Zealand, extending over 18-sq. km. Enjoy viewing unique volcanic features as you walk at your own pace along well-defined tracks. Relax in the first-class Visitor Centre, home to the Gift Shop and Café facilities. Visit the Mud Pool, the largest in New Zealand, it was originally the site of a large mud volcano which was destroyed through erosion in the 1920s. See the history and beauty of the Lady Knox Geyser at 10:15 am every day. Lady Knox Geyser provides a unique opportunity to see an eruption to heights of 10 to 20 metres.

Your accommodation: Bolton Hotel Wellington

The Bolton Hotel offers contemporary apartment-style accommodation in the heart of Wellington. Just steps from the Parliament buildings and central business district, Bolton Hotel is conveniently close to the best of the city's shops, cafes and restaurants and is within walking distance of Wellington's vibrant waterfront.

Meals included: Breakfast



Day 9



Interislander Ferry Wellington to Picton

The 92 km journey between Wellington and Picton takes around 3 hours and has been described as 'one of the most beautiful ferry rides in the world'. Leaving Wellington Harbour you pass many interesting points such as Pencarrow Head on top of which is New Zealand's oldest lighthouse (1859). Red Rocks is home to a seal colony and Oterangi Bay is the site which recorded the country's highest ever wind speed of 268 kph (167 mph).

From the Cook Strait spectacular views of the Kaikoura Ranges on the South Island can be enjoyed and dolphins and many sea birds are often seen. Around one hour of the cruise takes you through the Marlborough Sounds and this region of bush covered mountains, small islands, crystal clear waters and secluded bays offer remarkable photographic opportunities. The final leg of your cruise travels through Queen Charlotte Sound before coming to an end in the picturesque town of Picton.

Collect your rental car

This tour can be priced with any of the rental cars available in our fantastic range, from economy hatchbacks to prestige saloons and SUV's.

Picton to Blenheim

Only short 30 minute drive, you'll follow the valley south to arrive in Blenheim, located in the heart of Marlborough - New Zealand's largest wine producing region. Go through acres of leafy green vines and marvel at the magnificent 'dry hills' of Marlborough in the distance.

SUGGESTED ACTIVITY - Half Day Wine Tour

An afternoon among the vines! Be immersed in the Marlborough wine country with the Sounds Connection half day wine tour. You'll be collected from your accommodation and taken through three or four hand-picked wineries to taste the award-winning produce this region is known for. You'll also hear about the history of winemaking in Marlborough as well as learning the unique processes each winery goes through. A lunch stop is not included in this tour so we do advise you have something to eat prior to this activity.

Your accommodation: Marlborough Bed & Breakfast at Woodside

Marlborough Bed and Breakfast is an 1877 historic B&B nestled in 7 acres offering quiet relaxed luxury. Relax at this ideal base for exploring one of the world's finest wine regions.

Meals included: Breakfast



Day 10



Blenheim to Kaikoura

Cross the 'dry hills' of Marlborough and head towards one of the most spectacular coastlines of the South Island, the Kaikoura Coast. The road hugs the shore for around 50 kilometres and offers many chances to view native wildlife. To the east is the South Pacific Ocean and to the west the towering Kaikoura Ranges. Kaikoura Township is a bustling little place with many cafes, restaurants and shops, but the main reason for visiting here is the wildlife and it's one of the only places in New Zealand you can see whales year round.

Your accommodation: Bendamere House B&B

Bendamere House B&B has quality ensuite rooms, detached from the main house adding to the privacy and comfort, with superb views overlooking the Pacific Ocean and Seaward Kaikoura mountain range.

Meals included: Breakfast



Day 11



Kaikoura to Christchurch

Today you travel down the coast before heading inland through the North Canterbury wine region - the Waipara Valley. As you drive through this area you'll be greeted by one of New Zealand's most notorious animals, the sheep. If you've time on your hands we recommend taking a detour to Hanmer Springs for relaxing dip in its thermal pools. Arriving into Christchurch you'll see a new and improved city, steadily rising from the ruins of the 2011 earthquake.

SUGGESTED ACTIVITY - Ocean's Cabin with Whale Watch Kaikoura

Experience New Zealand's only marine based whale watching company. Whale Watch Kaikoura offer a once-in-a-lifetime, up close encounter with the giant Sperm Whale. You are also likely to encounter New Zealand fur seals, dusky dolphins and albatross. Depending on the season you may also see pilot, blue and southern right whales as well as migrating humpbacks. Often orcas can be spotted here and the world's smallest dolphin, the Hector's, occasionally make an appearance.

Cruise in style on modern catamarans, specifically designed for whale watching, featuring large passenger cabins and outside viewing decks. Passenger numbers for each tour are kept below the vessel carrying capacity to ensure your tour experience remains a personal one.

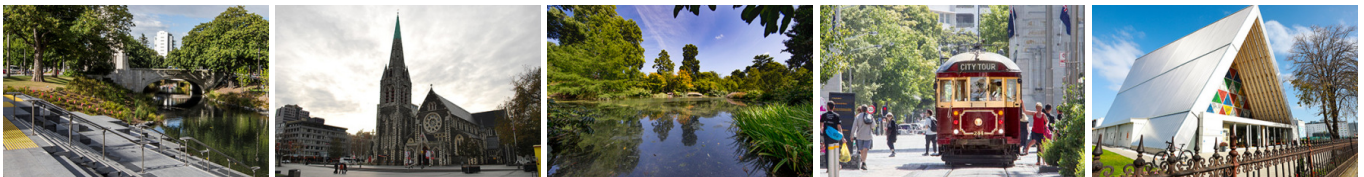
Your accommodation: Orari Apartments

Orari Bed and Breakfast offers elegant and inviting accommodation in the heart of Christchurch city. This heritage building has all the charm of a grand Victorian home, but with modern comforts providing for an enjoyable stay.

Meals included: Breakfast



Day 12



Explore Christchurch City

Following the 2011 earthquake that razed its centre and much of the outlying suburbs, Christchurch is well into a billion-dollar makeover. In the middle of the Canterbury Plains, bordering the Pacific Ocean, New Zealand's newest city is an ideal gateway to exploring the middle of the South.

Go punting on the Avon River, take a historic tram ride, catch the gondola to the rim of an extinct volcano or do all three! See the world's only Cardboard Cathedral and for nature enthusiasts - wander the renowned Christchurch Botanic Gardens, or head to Oxford Terrace in the city to find a great spot to eat or drink.

Drive an hour in any direction to ski, mountain bike, wine taste, whale-watch, bungee jump or play golf. Take the winding Port Hills road to the French settlement of Akaroa and tour the vines in Waipara for an authentic New Zealand wine-tasting experience.

SUGGESTED ACTIVITY - Christchurch Gondola

In the Heathcote Valley, just fifteen minutes from the heart of Christchurch City, ride the Christchurch Gondola for nearly a kilometer to the collapsed rim of an extinct volcano, which exploded six million years ago. Take in the spectacular panoramic views of the central city, Lyttelton Harbour, Banks Peninsula, Canterbury Plains, and the distant peaks of the Southern Alps. Wander the summit complex, enjoy a coffee or lunch in the cafe, and choose one of many nature walks to explore or visit the Christchurch Discovery Ridge, a dramatic reconstruction of the history of the Port Hills and Christchurch.

SUGGESTED ACTIVITY - Akaroa Day Tour and Harbour Nature Cruise with Leisure Tours

Enjoy a full day tour to Akaroa with Canterbury Leisure Tours. You will travel the scenic route to Akaroa via Governors Bay, Gebbies Pass, Lake Forsyth and Little River. Stop for spectacular views over the Akaroa Harbour. You'll then take a two hour cruise through Akaroa Harbour for a chance to see this quaint French settlement from the sea as well as dolphins, penguins and seals. On the return journey to Christchurch you will visit the cheese factory at Barry's Bay and sample some of New Zealand's finest cheese.

Lunch at the popular waterfront restaurant 'Bully Hayes' is included offering a wide choice of New Zealand cuisine.

Your accommodation: Orari Apartments

Orari Bed and Breakfast offers elegant and inviting accommodation in the heart of Christchurch city. This heritage building has all the charm of a grand Victorian home, but with modern comforts providing for an enjoyable stay.

Meals included: Breakfast



Day 13



Christchurch to Aoraki Mt Cook National Park

Today you'll drive through the heart of the South Island, crossing the vast Canterbury plains. Catch your breath in Geraldine before continuing through Fairlie. Ascending Burkes pass you'll come to the picturesque lakeside town of Tekapo.

Follow the road and take in the view of Aoraki Mt Cook (New Zealand's tallest mountain) from the shores of Lake Pukaki, known for its glacier fed turquoise blue colour. Continue along the lake to your final destination Mt Cook Village.

Please note: There are no food shops at Mt Cook, and dinner options are limited to one restaurant. If you wish to self-cater, you must stock up before arriving in Mt Cook, or make dinner reservations in advance.

SUGGESTED ACTIVITY - Glacier Explorers Mt. Cook

Experience 500 year old icebergs up-close on the Mt Cook terminal lake. The Glacier Explorers tour is the only one of its kind in New Zealand and one of only three in the world! Very few glaciers terminate into lakes and even fewer of them are accessible. See towering ice cliffs and floating icebergs from the safety of a specially designed boat. These boats provide a safe way to view unseen and inaccessible areas of New Zealand's largest glacier The Tasman.

Your accommodation: Hermitage Hotel, Aoraki Wing Premium

The Hermitage Hotel ringed by magnificent snow-capped peaks of the Southern Alps, is a world-renowned tourist destination and has been an icon of superior accommodation and dining since 1884.

Meals included: Breakfast



Day 14



Aoraki Mt Cook National Park to Dunedin

Today you'll leave Aoraki Mt Cook National Park and travel past Twizel, one of the locations for the Lord of the Rings films. Go through Omarama, the gliding capital of New Zealand, be sure to stop at The Wrinkly Ram, a quirky local cafe and souvenir store. Driving through the Waitaki Valley follow the hydro power generating system towards the east coast. Stretch your legs in Oamaru, known for its white stone buildings constructed with the local Oamaru Stone. If you were a little late off the mark this morning you may get the chance to see the blue penguins come ashore at dusk.

Continue south down the coast to Moeraki, and take a detour towards the beach to see the Moeraki Boulders, a unique geological feature well worth a look. As you arrive in Dunedin, take in the city's Edwardian and Scottish heritage reflected in the buildings around the city centre The Octagon.

Dinner at Camp Estate, Larnach Castle

Keeping with the historical setting of Larnach Castle, a four-course dinner is offered in a grand Castle Dining Room. This is a trust-the-chef experience where you may indulge in incredible meals and meet other guests. The menu reflects local meats and vegetables, served in a traditional New Zealand-style cuisine with the opportunity to pair with regional wines.

Your accommodation: Camp Estate at Larnach Castle

A luxurious country house built from blue stone and features a spectacular marble staircase. The modern rooms are all double glazed and the reception rooms are all heated by open fires and underfloor heating. Staying at Camp Estate includes entry to Larnach Castle and the grounds.

Meals included: Breakfast, Speciality Dinner



Day 15



Explore Dunedin and the Otago Peninsula

Known as the Edinburgh of the South, Dunedin City has a heavy Scottish influence. Surrounded by rugged coastal plains and windswept beaches it's home to an eclectic mix of historical and modern architecture as well as industrial technology. Renowned for its Flemish Baroque-inspired 'gingerbread house' Railway Station, this university town is bustling with life. Head to the Saturday farmers market held in the aforementioned railway grounds for a taste of organic produce, handmade crepes and local honey. Explore the many cafes and wine bars in The Octagon, then continue on a self-guided walking tour of the internationally acclaimed Street Art dotted around the city. Drive to the coast and watch the freighters passing in the distance while you sunbathe, or hire a mountain bike and test your legs on one of the many trails available in the area. For a more immersive historical experience, follow the coast to New Zealand's only castle, Larnach Castle. On your way back be sure to head to the Otago Peninsula to see the largest mainland Albatross colony in the world.

Dinner at Camp Estate, Larnach Castle

Keeping with the historical setting of Larnach Castle, a four-course dinner is offered in a grand Castle Dining Room. This is a trust-the-chef experience where you may indulge in incredible meals and meet other guests. The menu reflects local meats and vegetables, served in a traditional New Zealand-style cuisine with the opportunity to pair with regional wines.

SUGGESTED ACTIVITY - Penguin Tour with The Opera

Learn about the endangered Yellow Eyed Penguin when you visit The Opera - Otago Peninsula Eco Restoration Alliance, a private conservation reserve dedicated to ensuring the survival of this unique species. The project is entirely funded by guided tours which allow the conservation team to engage in habitat restoration, predator control, a research program, and an on-site rehabilitation facility.

On your tour, you will learn about the issues the Yellow Eyed Penguin faces, their life cycle, and how the project is carried out. Your experience will begin in a theatre before moving to the rehabilitation center where penguins may be seen up close. You'll take a short bus trip over to the reserve and be led on foot approx 2km by your guide through a system of covered trenches to view hides that allow access to the living and breeding habitat of this very shy bird without disturbing them. There is also an opportunity to meet other animals that reside in the reserve including fur seals, sea lions, and several species of shore and land birds.

SUGGESTED ACTIVITY - Albatross Classic Tour with Royal Albatross Centre

This 60 minute tour focuses on the Royal Albatrosses and wildlife that inhabit Pukekura (Taiaroa Head). Begin with a short film, then enjoy the informative commentary provided by your guide about albatrosses as you visit the observatory to see nesting albatross in their natural habitat.

SUGGESTED ACTIVITY - Monarch Wildlife Cruise from Wellers Rock

An unforgettable experience viewing rare and fascinating wildlife. Board the Monarch Boat and take in the fascinating sight of the Northern Royal Albatross as it comes into nest on the spectacular cliffs of Taiaroa, Otago Peninsula. You'll also see eight other species of birds including sooty shearwaters and petrels as well as sea lions and fur seals and if you're lucky dolphins and whales.

Your accommodation: Camp Estate at Larnach Castle

A luxurious country house built from blue stone and features a spectacular marble staircase. The modern rooms are all double glazed and the reception rooms are all heated by open fires and underfloor heating. Staying at Camp Estate includes entry to Larnach Castle and the grounds.

Meals included: Breakfast, Speciality Dinner



Day 16



Dunedin to Te Anau

The drive to Te Anau takes you through classic Southland farming scenery. Head off-the-beaten-track today and follow the coastline instead of the inland route. Go through The Catlins area and be sure to take a detour to Kaka Point to view its majestic cliffs and pounding surf. Continue through Invercargill to Riverton and Colac Bay, and then head north to Manapouri. From here you can embark on a day or overnight cruise to the remote Doubtful Sound, renowned for its natural beauty. Just a short way further will bring you to your lakeside destination of Te Anau, gateway to Fiordland National Park and Milford Sound.

Your accommodation: Te Anau Lodge

Te Anau Lodge began its existence as a Catholic convent in 1936 before being converted into a wonderful lodge. A beautiful Rimu wood interior awaits you and each of the 7 rooms house furniture made from stunning native woods.

Meals included: Breakfast



Day 17



Te Anau to Milford Sound and return to Te Anau

The road to Milford Sound offers some of the most beautiful and iconic scenery in the country. From crystal clear lakes and towering mountains to lush glacier formed meadows, this area is dramatic and unyielding. Stretch your legs on the Chasm Walk, a short stroll through native beech forest to see several powerful waterfalls. Continue on through the Homer Tunnel, an engineering marvel at 1219 metres long. Arriving into the village of Milford, you will be greeted with an amazing view of Mitre Peak. A day cruise into the heart of the sound is not to be missed. You'll learn about how this magnificent area was formed and experience the wonder of the falls that line the Fiord before back-tracking the way you came.

Please note: Make sure to allow 2.5hrs to Milford Sound, this takes into account the current road works on the Milford Road.

Milford Sound Cruise with RealNZ

Get up close and personal with Milford Sound on a leisurely cruise of this spectacular fiord. From thundering waterfalls to sky-high mountains to lush rainforests, Milford has it all. Experience the spray of a waterfall as you cruise close to sheer rock faces. Informative, participative and relaxed, this is the perfect way to experience Milford Sound to the fullest.

Your accommodation: Te Anau Lodge

Te Anau Lodge began its existence as a Catholic convent in 1936 before being converted into a wonderful lodge. A beautiful Rimu wood interior awaits you and each of the 7 rooms house furniture made from stunning native woods.

Meals included: Breakfast, Lunch



Day 18



Te Anau to Queenstown

Today you'll cross vast tussock lands on your way to Queenstown. Pass through Mossburn, the deer capital of the nation. Continue on through the Southland countryside where the road begins to hug the lake edge and the Remarkables mountain range towers over your approach into the adventure capital of New Zealand.

SUGGESTED ACTIVITY - TSS Earnslaw cruise to Walter Peak including gourmet BBQ dinner and a farm tour

Enjoy a quintessential Kiwi experience, a delicious gourmet BBQ buffet meal and a farm demonstration in a stunning lakeside setting. Take in the stunning views of Lake Wakatipu and its surroundings as you cruise across the lake to the historic Walter Peak high country farm aboard the TSS Earnslaw Steamship.

Enjoy the ambience of the heart of the stately homestead while your Colonel's Homestead Restaurant chef prepares a gourmet BBQ dinner. Your seasonal menu includes an extensive selection of local New Zealand produce, including succulent meats and a selection of delicious vegetables and salads. Complete your meal with your choice of delicious desserts, New Zealand cheeses, tea and coffee. After dinner, watch the farm dogs in action with a sheep-herding demonstration and say hello to the other farm animals. Finally, cruise home under the southern stars and enjoy the fresh night air as the lights of Queenstown draw ever closer.

Your accommodation: The Dairy Private Hotel by Naomi

The Dairy Private Hotel – a unique blend of exquisite design, rich history and warm hospitality in the city centre. Beginning as Queenstown's original 'dairy' (corner store) in 1920, it has now transformed into an interiors masterpiece after an exquisite refurbishment that features wallpapers from British luxury interiors brand House of Hackney.

Meals included: Breakfast



Day 19



Explore Queenstown

Well-known as New Zealand's 'adventure capital', Queenstown is home to a range of adventures, from the world's first and most famous bungy jumps to jet boat thrills, white-water rafting, and skydiving. However, Queenstown offers far more than a fast-paced, action-packed holiday. Settled on the shores of beautiful Lake Wakatipu beneath a soaring panorama of the Remarkables Mountain Range, this alpine town is surrounded by a plethora of historic, gastronomic, and scenic wonders. Take a stroll through the beautiful lakefront parks and gardens, browse through market stalls on weekends, dine in wonderful al-fresco restaurants, or ride on the 100-year-old historic Steamship - TSS Earnslaw to Walter Peak Station. Take the Queenstown Gondola up to Bob's Peak and soak up the panoramic views of the magnificent lake and mountain ranges. And after all of that, if you do want the adrenaline rush, Queenstown is known for taking your pick from the Shotover Jet, Canyon Swing, Zipline, Luge, or Heli-ski.

SUGGESTED ACTIVITY - Dart River Wilderness Jet

Journey deep into the heart of the world-renowned Mt Aspiring National Park, where myth, heritage and fantasy come to life. As one of Queenstown's most exhilarating activities, the Wilderness Jet adventures on a spectacular journey deep into the heart of the world-renowned Mount Aspiring National Park.

Your accommodation: The Dairy Private Hotel by Naomi

The Dairy Private Hotel – a unique blend of exquisite design, rich history and warm hospitality in the city centre. Beginning as Queenstown's original 'dairy' (corner store) in 1920, it has now transformed into an interiors masterpiece after an exquisite refurbishment that features wallpapers from British luxury interiors brand House of Hackney.

Meals included: Breakfast



Day 20



Queenstown to Franz Josef Glacier via Wanaka

From Queenstown you'll cross the Crown Range, the highest sealed road in New Zealand to arrive in the Alpine town of Wanaka, gateway to Mt Aspiring National Park. Skirting the shores of both Lake Wanaka and Hawea, you will enter the small town of Makarora. Stop at Blue Pools for a 1-hour return walk through the native beech forest to a glacier-fed swimming hole. Continue on through the remote seaside settlement of Haast before heading up the wild West Coast highway you pass through ancient temperate rainforests while getting sneak peeks of the wild coast beaches occasionally. Paringa Salmon Farm is worth a stop to stretch your legs, feed the fish, and stop for lunch and refreshments. Keep heading North and be sure to enjoy the view of the ever-changing towering snowcapped Southern Alps Mountain Range. Fox Glacier welcomes you first, then comes your destination for the night Franz Josef township.

Your accommodation: Westwood Lodge

Westwood is a purpose built lodge, crafted entirely from wood and exquisitely decorated throughout. The lounge is the place to meet to watch the Southern Alps turn a soft pink in the setting sun.

Meals included: Breakfast



Day 21



Explore Franz Josef

Franz Josef is a small but lively town in the heart of the West Coast, known for its 12 km long glacier. Surrounded by lush rainforest-clad mountains the township has a vibrant and bustling atmosphere. To see the ice from a viewpoint you can walk along the valley floor to the viewpoint below the terminal face. However, to go on the glacier itself you must take a licensed helicopter tour.

SUGGESTED ACTIVITY - Franz Josef Nature Tour with Glacier Valley Eco Tours

Nestled in thick historic West Coast forest and a stone's throw from wild black sand beaches, this is one of the world's most unusual glaciers. Beautiful blue skies or magical misty rain, whatever the weather - you will feel like you are in Narnia or LOTR.

With easy walking at your pace, information on glaciology, geology, geomorphology, flora and fauna, local legends, history, and small guided groups with fantastic guides, you will experience this glacier in style and in the best hands with the only local company. Wander past glacier rivers and streams and through beautiful podocarp forest; discover hidden natural treasures such as native snails, wild native mushrooms, and dozens of species of native orchids; listen to native bird song and waterfalls; see if you can spot a Chamois or a Tahr on the huge snow-capped mountains above while drinking a cup of tea and talking one-on-one with your guide. This tour will be a highlight of your travels in New Zealand.

SUGGESTED ACTIVITY - Twin Glacier Scenic Helicopter Flight with The Helicopter Line

Take a spectacular scenic flight over two of New Zealand's most famous glaciers. Land at the head of one and view the incredible sight of this frozen river as it winds its way through ancient carved valleys. Should weather not be suitable to take this flight you are able to transfer your booking onto a similar tour on any of the Helicopter Line's operations in Queenstown or Mt Cook.

Your accommodation: Westwood Lodge

Westwood is a purpose built lodge, crafted entirely from wood and exquisitely decorated throughout. The lounge is the place to meet to watch the Southern Alps turn a soft pink in the setting sun.

Meals included: Breakfast



Day 22



Franz Josef to Greymouth Train Station

Today head north along the mighty West Coast highway you pass through ancient temperate rainforests while getting sneak peeks of the wild coast beach occasionally. Whataroa is the next town where you can see one of the world's rarest birds, the New Zealand white heron or Kotuku nest at the Waitangi Roto Nature Reserve, and guided tours from October to March will take you there. Ross is the site of an old gold mining town and some of the old buildings and workings remain. In fact, Ross is still home to one of the few working gold mines left in New Zealand and the local information center offers you the chance to pan for gold.

Hokitika is a great place to explore craft and gift stores and head to the coast and take in the endless sea views. The Jade or Greenstone on offer in Hokitika is probably some of the best you will see in the country. The Hokitika Gorge is located 45 minutes inland and offers turquoise waters flowing through a narrow gorge. A great short walk will deliver you to this piece of paradise.

Continue on to Greymouth, the largest town on the West Coast and the starting point for the next leg of your journey the TranzAlpine Scenic Train. Drop your rental car at the Greymouth Train Station depot located at the train station building before boarding your train to Christchurch.

TranzAlpine Scenic Train: Greymouth to Christchurch

Considered one of the world's great train journeys, the TranzAlpine Scenic Train takes you from Greymouth to Christchurch. You'll travel across the South Island from the west to the east coast through Arthur's Pass National Park. From the comfort of your carriage see lush beech forest, deep river valleys and the spectacular peaks of the Southern Alps. Descend to the windswept Canterbury Plains before arriving in the city of Christchurch.

Private Transfer Christchurch Train Station to your accommodation

On arrival at the Christchurch train station, you will be met by a private driver and transferred to your accommodation.

Your accommodation: Orari Apartments

Orari Bed and Breakfast offers elegant and inviting accommodation in the heart of Christchurch city. This heritage building has all the charm of a grand Victorian home, but with modern comforts providing for an enjoyable stay.

Meals included: Breakfast



Day 23



Private transfer accommodation to Christchurch Airport

A private transfer will collect you from your accommodation and transfer you to Christchurch Airport in time for your departing flight.

Tour details

Departures:	Daily
Tour type:	Nationwide Self Drive
Starts:	Auckland
Finishes:	Christchurch
Tour length:	23
Accommodation:	Boutique Lodges & Hotels
Car/transport type:	

Included activities

Includes	All breakfasts
Includes	Private train station transfers
Includes	Private airport transfers
Includes	TranzAlpine Train from Greymouth to Christchurch
Includes	Interislander ferry crossing
Includes	Real Journeys Milford Sound Cruise

Accommodation summary

Day 1	Fable Auckland
Day 2	Fable Auckland
Day 3	Arcadia Lodge, Russell
Day 4	Arcadia Lodge, Russell
Day 5	Woodhouse Mountain Lodge Warkworth
Day 6	The Springs Rotorua
Day 7	The Springs Rotorua
Day 8	Bolton Hotel Wellington
Day 9	Marlborough Bed & Breakfast at Woodside
Day 10	Bendamere House B&B
Day 11	Orari Apartments
Day 12	Orari Apartments
Day 13	Hermitage Hotel, Aoraki Wing Premium
Day 14	Camp Estate at Larnach Castle
Day 15	Camp Estate at Larnach Castle
Day 16	Te Anau Lodge
Day 17	Te Anau Lodge
Day 18	The Dairy Private Hotel by Naumi
Day 19	The Dairy Private Hotel by Naumi
Day 20	Westwood Lodge
Day 21	Westwood Lodge
Day 22	Orari Apartments