



Auckland to Queenstown Discovery Tour

Experience an unforgettable journey through New Zealand's most iconic destinations. Start your journey in Auckland, and explore the cultural heart of Rotorua, the vibrant capital of Wellington, the seaside charm of Kaikōura, and the revitalized city of Christchurch. Marvel at the breathtaking beauty of Aoraki/Mt Cook and immerse yourself in the adventure capital of Queenstown. Along the way, connect with native flora and fauna and savor the authentic flavors of the Kiwi lifestyle.

Starts in: Auckland
Finishes in: Queenstown
Length: 14days / 13nights
Accommodation: Hotel 3 star
Can be customised: Yes

This itinerary can be customised to suit you perfectly. We can add more days, remove days, change accommodations, mix it up, add activities to suit your interests or simply design and create something from scratch. Call us today to get your custom New Zealand itinerary underway.



Inclusions:

Includes: Late model rental cars
Includes: Fully inclusive rental car insurance (excess may apply)
Includes: Unlimited kms
Includes: Afterhours emergency support while touring
Included activity: Private Transfer Auckland Airport to your Auckland Accommodation with Tourcorp
Included activity: Electronic Travel Guide and In-Country Support App
Included activity: The Visitor Promise - Cultural Learning Course
Included activity: Auckland Sky Tower Admission
Included activity: Wai-O-Tapu Thermal Wonderland
Included activity: Interislander Ferry Wellington to Picton
13 breakfasts

Day 1



Private Transfer Auckland Airport to your Auckland Accommodation with Tourcorp

You will be met at the Auckland airport by the driver and transferred to your Auckland accommodation.

Welcome to Auckland

Welcome to Auckland, known in Māori as Tāmaki Makaurau. Auckland is New Zealand's vibrant "City of Sails," and the country's largest metropolitan area. Nestled between the Pacific Ocean and the Tasman Sea. Surrounded by native bush, lush rainforests, and pristine beaches, Auckland is a haven for both adventurers and urban explorers. Wander through world-class museums and galleries in the city centre or enjoy a peaceful retreat at the Auckland Gardens, where stunning landscapes showcase New Zealand's diverse flora. Stroll along the lively waterfront to savour fresh seafood and international cuisine at Viaduct restaurants. For an unforgettable perspective, ascend the iconic SkyTower, New Zealand's tallest structure, and take in panoramic views of the city and its picturesque islands.

SUGGESTED ACTIVITY - Harbour Sailing Dinner Cruise with Explore

This unique on-water sailing and dining experience is not to be missed while you're in Auckland. Enjoy smooth sailing on the Waitemata Harbour - then watch this photogenic city come alive with twinkling lights. Enjoy your meal as you sail around the beautiful Auckland Harbour taking in the view as the sun slowly sets. You'll be treated to canapes and a drink as you set off towards Westhaven Marina. To finish the evening off, savour your dessert course as you leisurely sail back to Auckland's vibrant Viaduct Harbour.

Your accommodation: Edit Auckland Central

Discover Edit Auckland Central, your perfect city base! Steps from Sky Tower, Britomart & the Viaduct. Enjoy vibrant dining, shopping & nightlife. Relax in stylish, versatile rooms with amenities like a gym & parking.



Day 2



Collect Rental Car

This tour's from price includes an intermediate-sized vehicle, setting you up for comfortable travels. Yet, we understand every adventure is unique! Feel free to select the perfect wheels from our incredible collection of rental cars, spanning from economy hatchbacks to premium SUVs.

Explore Auckland

Perched on the edge of a large natural harbour, New Zealand's "City of Sails" offers the best of both worlds. Sandy beaches, native bush and lush rainforests give way to a vibrant urban culture. Spend time in the Viaduct Harbour, try your hand at sailing an America's Cup Yacht or take the ferry to nearby Waiheke Island for a gourmet food and wine experience. Venture to the top of Auckland's highest volcano, Mt Eden, for soaring views of the Hauraki Gulf or hop on the short ferry to Rangitoto Island and hike to the top of the volcanic island. Immerse yourself in nature at the expansive Auckland Botanic Gardens, sprawled across 156 acres of native forest, pack a picnic, soak up the sunshine, and enjoy the birdsong. Head up to the Sky Tower, standing over 300m tall, and have a meal in the 360-degree revolving restaurant. Scale the outermost perimeter of the Harbour Bridge or test your stomach with a bungee jump, then end your day on Ponsonby Road sampling upmarket culinary delights.

Auckland Sky Tower Admission

Standing at 328 meters (just over 1000 feet) - the Sky Tower is the tallest man-made structure in New Zealand and offers panoramic views of the Auckland landscape. Travel in the glass-fronted lift to one of three spectacular viewing platforms, or for a little more excitement do a SkyWalk - an outside loop around the pergola 192 meters (just over 600 feet) above ground. If you're really bold, Take the quick way down and SkyJump off the tower - a controlled free fall to the base.

Inside, the Sky Lounge offers coffee and light meals while the iconic Orbit Restaurant is Auckland's only 360-degree revolving dining experience.

SUGGESTED ACTIVITY - Ferry from Auckland to Rangitoto Island and return with Fullers

A short cruise through the Waitemata Harbour to the Hauraki Gulf delivers you to Rangitoto Island. Rangitoto Island is the largest and youngest of the many volcanoes that make up the Auckland volcanic field. It erupted around 600 years ago, but is extinct now and safe to explore. During your cruise to and from the island enjoy fantastic views of Rangitoto Island and Auckland. On reaching the island you can walk to the summit (1 hour direct) for great views of the Hauraki Gulf and over Waitemata Harbour looking back towards Auckland. There are a number of walking trails to explore this volcanic island, further information can be found at the Department of Conservation website.

SUGGESTED ACTIVITY - General Admission to Auckland Zoo

Just minutes from central Auckland, Auckland Zoo boasts New Zealand's largest collection of wildlife, nestled within 17 hectares of lush parkland. Home to an array of native and exotic animals, it's the perfect destination for nature enthusiasts and families seeking a fun, educational experience.

Your accommodation: Edit Auckland Central

Discover Edit Auckland Central, your perfect city base! Steps from Sky Tower, Britomart & the Viaduct. Enjoy vibrant dining, shopping & nightlife. Relax in stylish, versatile rooms with amenities like a gym & parking.

Meals included: Breakfast



Day 3



Auckland to Rotorua

The drive south from Auckland takes you past the the Bombay Hills which mark the outer boundary of greater Auckland area and it's here you turn inland to central Waikato. You'll soon go through the town of Matamata where you can visit the fully intact Hobbiton film set used in the shooting of the Lord of The Rings and Hobbit trilogies. Continuing on, you'll pass several small farming communities before telltale signs of steam and other geothermal activity signal your arrival into Rotorua.

SUGGESTED ACTIVITY - Hobbiton Movie Set Tour from Shires Rest

In the heart of New Zealand, you can step into the lush pastures of the Shire with a guided tour of Hobbiton, as featured in The Lord of the Rings and The Hobbit Trilogies. Hobbiton is located just outside of Matamata in the heart of the lush Waikato farming region. Here you can visit such iconic Hobbit locations as Hobbit Holes, the Green Dragon Inn, the Mill and the Party Tree with a guide sharing behind-the-scenes tales and insight into the making of the films. Spend time wandering through Bagshot Row before being led inside a Hobbit Hole to view the detailed interior, designed to provide an authentic glimpse into the dwelling of a Hobbit.

Rotorua

Discover the geothermal, adventure, and cultural wonderland of Rotorua. As you explore, you may see steam rising from cracks in the road, bubbling and hissing water in pools along the lake's edge, and the unmistakable smell of Sulfur. Rotorua is rich in Māori culture and history, with many Māori inhabitants recognising the great potential of the volcanic land. For an outdoor adventure, head to The Redwoods and experience the rainforest treetops from high up. There are a few accessible trails for disabled hikers and great biking trails as well. If you're lucky, you might spot some of New Zealand's native birds, such as the Pīwakawaka (Fantail) and the Tūī. Alternatively, enjoy the Lake Tikitapu Blue Lake Walk or explore Kuirau Park, where you'll find bubbling mud pools and steaming lakes. Don't miss the private thermal reserves such as Te Puia and Wai-O-Tapu, where you can walk among bubbling mud pools, spouting geysers, and Sulfur ponds. Just a few minutes from the town centre, the Agrodome and National Kiwi Hatchery offer an insight into nature. Rotorua's rich Māori culture is a must-see. Spend an evening with Te Pā Tū, complete with a traditional-style dinner or stroll along the lake edge to reach one of the country's oldest Māori villages at Ohinemutu. When hunger strikes, visit Eat Street in Rotorua CBD, a vibrant street lined with delicious eateries and restaurants to satisfy any craving. No visit to Rotorua would be complete without experiencing Rotorua's original tourist attraction - a relaxing spa treatment. This town boasts an array of wellness experiences to unwind in. Whether you are seeking adventure, culture, or relaxation, Rotorua offers an unforgettable experience.

Your accommodation: Sudima Lake Rotorua

Sudima Hotel Lake Rotorua boasts a location that is second-to-none, right on the shores of beautiful Lake Rotorua. Adjacent to the world-famous Polynesian Spa complex and just a short stroll to all the attractions in Rotorua.

Meals included: Breakfast



Day 4



Explore Rotorua

Peppered with natural hot springs, boiling mud pools and steaming geysers, Rotorua sits within one of the world's most active volcanic regions. Geothermal landmarks aside, this city of sulphur has a rich indigenous history. Home to several prominent Māori tribes, a visit to one of the Māori experiences should be high on your agenda, learn about the special meaning of pounamu-Greenstone with Mountain Jade, explore the geysers and arts of Te Puia or immerse in an evening with Te Pā Tū. An excursion to one of the area's wellness spas is also a must! Try the Polynesian Spa for an invigorating soak in its natural mineral hot springs, Wai Ariki offers an indulging and unwinding restorative journey or pay a quick visit to Secret Spot for a soak and a delicious smash burger! If it is a thrill you are looking for, spike your adrenaline at Rotorua Canopy Tours, soaring above the ancient native forest below. Alternatively, head up the Skyline Rotorua Gondola for soaring lake views, and ride the luge at night for an extra thrill. Make the most of your time in Rotorua with an excursion through the Wai-O-Tapu Thermal Wonderland, one of the area's most colourful volcanic attractions. Whatever you are after, Rotorua is almost certain to have it!

SUGGESTED ACTIVITY - Mountain Jade - Highlights Tour

This 30-minute highlights tour is a rare opportunity to spend time with New Zealand Jade artists. New Zealand Jade known as Greenstone, but more commonly known in New Zealand as Pounamu has a rich history within Maori culture. The expert guide will show you the intricate process of Pounamu carving firsthand in the Mountain Jade studio. The local artist will be there to personally demonstrate the carving process and share their stories and knowledge with you. To top off the tour, you will get to select your very own piece of Pounamu and learn to string it yourself so you can take it home.

SUGGESTED ACTIVITY - National Kiwi Hatchery Experience

The National Kiwi Hatchery Experience is a special opportunity to gain insight into and view this highly regarded conservation centre. Developed with the visitor experience in mind, the hatchery boasts special viewing opportunities and is hosted by kiwi expert guides who ensure guests leave fully informed and all questions answered. Learn all about New Zealand's intriguing national icon and the efforts of the kiwi husbandry team, see and discover what it takes to hatch and rare chicks, and if you're lucky see baby chicks in person!

Wai-O-Tapu Thermal Wonderland

Wai-O-Tapu Thermal Wonderland is a spectacular showcase of New Zealand's colourful and unique geothermal elements sculpted by thousands of years of volcanic activity. You will be introduced to a diversely different natural landscape, extending over 18-sq. km. Enjoy viewing the volcanic features as you walk at your own pace along well-defined tracks. Relax in the first-class Visitor Centre, home to the Gift Shop and Café facilities. Visit the Mud Pool, the largest in New Zealand, it was originally the site of a large mud volcano which was destroyed through erosion in the 1920s. See the history and beauty of the Lady Knox Geyser at 10:15 am every day where a daily eruption happens of up to 20 metres.

SUGGESTED ACTIVITY - Te Pā Tū Evening Māori Cultural Experience - Dinner Included

New Zealand's Most Awarded Cultural Attraction, presenting Te Pā Tū. Feast on song, drama, tradition, and divine seasonal kai (cuisine) within the forest Pā (village) blanketed by towering Tawa trees, blazing bonfires, and a forest-formed amphitheatre. Te Pā Tū shares Māori history, traditions, and cultural aspirations across 4-hours of celebration and feasting. These events change with each season of the Maramataka, the Māori lunar calendar.

Your accommodation: Sudima Lake Rotorua

Sudima Hotel Lake Rotorua boasts a location that is second-to-none, right on the shores of beautiful Lake Rotorua. Adjacent to the world-famous Polynesian Spa complex and just a short stroll to all the attractions in Rotorua.

Meals included: Breakfast



Day 5



Rotorua to Wellington

The drive from Rotorua to Wellington takes you via the township of Taupō home to New Zealand's largest lake. Following the lakeshore South you'll pass Turangi and then ascend the central plateau onto the high country Rangipo Desert. Skirting the edge of Tongariro National Park, you'll reach the military town of Waiouru before descending through rich farmland and the rural towns of Taihape And Mangaweka. Follow the coast through Paraparaumu, Paekakariki and Plimmerton to arrive at your destination, Wellington.

Wellington

Wellington known in Māori as Te Whanganui-a-Tara is home to New Zealand's centre of government. Often referred to as 'mini Melbourne', this windy city is a melting pot of art, culture, food, and fashion. Quirky laneway bars, underground art shows, and hipster eateries make up its inner-city vibe, while a host of sandy beaches outside the urban bustle bring a cheerful holiday feel. Head to Te Papa Museum for a history lesson and a ticket to one of its many international exhibitions or jump aboard the Wellington Cable Car - the only running funicular railway in the country. For those with an eye for boutique, fashion wander through Cuba St to sample some of the city's best vintage stores. Break for coffee at a hipster cafe and be sure to snap a pic outside the 'Beehive', New Zealand's parliamentary debate chamber. Go behind the scenes at Weta Workshop Experience, the Oscar Award Winning design studio behind Lord Of The Rings, The Hobbit, and Avatar. If you're a foodie at heart, a two-hour round trip to Martinborough is a must-do. Take your time as you wind through spectacular wine country. For an educational day out, learn about New Zealand's native species at Zealandia, the world's first fully-fenced eco-sanctuary and home to over 40 types of endangered and native birds.

Your accommodation: Hotel Ibis Wellington

Hotel Ibis Wellington is ideally located in Featherston Street in the heart of Wellington City and easy walking distance to Wellington's famous cafe lifestyle.

Meals included: Breakfast



Day 6



Wellington

Wellington known in Māori as Te Whanganui-a-Tara is home to New Zealand's centre of government. Often referred to as 'mini Melbourne', this windy city is a melting pot of art, culture, food, and fashion. Quirky laneway bars, underground art shows, and hipster eateries make up its inner-city vibe, while a host of sandy beaches outside the urban bustle bring a cheerful holiday feel. Head to Te Papa Museum for a history lesson and a ticket to one of its many international exhibitions or jump aboard the Wellington Cable Car - the only running funicular railway in the country. For those with an eye for boutique, fashion wander through Cuba St to sample some of the city's best vintage stores. Break for coffee at a hipster cafe and be sure to snap a pic outside the 'Beehive', New Zealand's parliamentary debate chamber. Go behind the scenes at Weta Workshop Experience, the Oscar Award Winning design studio behind Lord Of The Rings, The Hobbit, and Avatar. If you're a foodie at heart, a two-hour round trip to Martinborough is a must-do. Take your time as you wind through spectacular wine country. For an educational day out, learn about New Zealand's native species at Zealandia, the world's first fully-fenced eco-sanctuary and home to over 40 types of endangered and native birds.

Explore Wellington museums

Discover Wellington's vibrant museum scene, where history, art, and culture collide. Te Papa Tongarewa, New Zealand's national museum, offers immersive exhibits exploring the nation's art, culture, and natural history. The Wellington Museum shares the fascinating stories of the Wellington region. For art lovers, City Gallery Wellington showcases cutting-edge contemporary works from local and international artists. Perfect for all ages, Wellington's museums blend education and inspiration, making them a must-visit in the capital.

SUGGESTED ACTIVITY - Lord Of The Rings Half Day Private Tour with Capital Personalised Tour

Prepare for an unforgettable LOTR adventure. Leaving Wellington, you will first head for the hills, admiring views from Mt Victoria before visiting Hobbit's Hideaway in the 'Outer Shire'. Next, immerse yourself at the Weta Cave in Miramar. Tour the museum, shop, and capture photos with iconic movie props. Experience the fascinating 'Weta Workshop Experience', going behind-the-scenes to see props and weaponry, with artists describing their creations. After a magical cinematic journey, you will return to Wellington.

SUGGESTED ACTIVITY - Taste of Wellington Foodie Delights Private Tour with Kaewa Tours

Enjoy a 7 hour private guided tour where you savour the best tastes Wellington has to offer. From Coffee, Chocolate, Peanut butter, a Craft beer brewery, Gin Distillery, lunch, and a scenic drive to Mt Victoria, Eastern and Southern Bays.

SUGGESTED ACTIVITY - Zealandia By Night Wildlife Sanctuary Tour

Taking a night tour of Zealandia wildlife eco-sanctuary is an unforgettable experience and one that comes highly recommended. A conservation success and safe haven for some of New Zealand's rarest native animals, Zealandia is home to many remarkable species of birds, reptiles and insects living wild within a beautiful 225 hectare (one square mile) valley, just 10 minutes from the central city.

Your accommodation: Hotel Ibis Wellington

Hotel Ibis Wellington is ideally located in Featherston Street in the heart of Wellington City and easy walking distance to Wellington's famous cafe lifestyle.

Meals included: Breakfast



Day 7



Return Rental Car to Wellington Ferry Terminal

Return your rental vehicle at the Wellington Ferry Terminal rental car depot and continue on the journey.

Interislander Ferry Wellington to Picton

The 92 km journey between Wellington and Picton takes around 3 hours and has been described as 'one of the most beautiful ferry rides in the world'. Leaving Wellington Harbour the ferry passes many interesting points such as Pencarrow Head on top of which is New Zealand's oldest lighthouse (1859). Red Rocks is home to a seal colony and Oterangi Bay is the site which recorded the country's highest ever wind speed of 268 kph (167 mph).

From the Cook Strait spectacular views of the Kaikōura Ranges on the South Island can be enjoyed and dolphins and many sea birds are often seen. Around one hour of the cruise takes you through the Marlborough Sounds and this region of bush covered mountains, small islands, crystal clear waters and secluded bays offer remarkable photographic opportunities. The final leg of the cruise travels through Queen Charlotte Sound before coming to an end in the picturesque town of Picton.

Collect Rental Car

This tour's from price includes an intermediate-sized vehicle, setting you up for comfortable travels. Yet, we understand every adventure is unique! Feel free to select the perfect wheels from our incredible collection of rental cars, spanning from economy hatchbacks to premium SUVs.

Picton to Blenheim

It is a short 30 minute drive, as you'll follow the valley south to arrive in Blenheim, located in the heart of Marlborough - New Zealand's largest wine producing region. Go through acres of leafy green vines and marvel at the magnificent 'dry hills' of Marlborough in the distance.

Blenheim

Surrounded by endless rows of vines, Blenheim lies at the heart of the Marlborough wine region. This charming, compact town is built around a traditional marketplace, offering a welcoming atmosphere and a taste of local life. With a fantastic selection of cafés, restaurants, and shops, it's the perfect place to unwind for an afternoon. The town is also home to the Omaka Aviation Heritage Centre, which houses Peter Jackson's Great War collection, complete with mannequins by Weta Workshop.

Of course, no visit to the region would be complete without sampling its world-class wines at the many renowned wineries.

SUGGESTED ACTIVITY - Half Day Marlborough Wine Tour with Sounds Connection

An afternoon among the vines! Be immersed in the Marlborough wine country with the Sounds Connection half day wine tour. Get collected from your accommodation and taken through three or four hand-picked wineries to taste the award-winning produce this region is known for. Hear about the history of winemaking in Marlborough as well as learning the unique processes each winery goes through.

Your accommodation: Carnmore Chateau Marlborough

Carnmore Chateau Marlborough offers luxury accommodation in the heart of Blenheim, one of New Zealand's most famous wine regions. This boutique hotel prides itself on offering guests luxury accommodation with enviable attention to detail, overlooking Seymour Square Gardens and is just a short walk from Blenheim's town centre.

Meals included: Breakfast



Day 8



Blenheim to Kaikōura

Cross Marlborough and head towards one of the most spectacular coastlines of the South Island, the Kaikōura Coast. The road hugs the shore for around 50 kms and offers many chances to view native wildlife. To the east is the South Pacific Ocean and to the west the towering Kaikōura Ranges. Kaikōura Township is a bustling little place with many cafes, restaurants and shops, but the main reason for visiting here is the wildlife and it's one of the only places in New Zealand you can see whales year round.

Kaikōura

Kaikōura is a breathtaking seaside town teeming with marine life and natural beauty. As you wander through this coastal paradise, you'll be enveloped by the fresh sea breeze and the sounds of the ocean. Begin your adventure by observing the lively fur seal colony at the tip of the peninsula. For an unforgettable experience, board a boat to go whale watching and marvel at the majestic whales that call these waters home year-round. If you're feeling adventurous, take the plunge and swim with the playful dusky dolphins in their natural habitat. For bird enthusiasts, Kaikōura offers the chance to get up close with the native albatross, an awe-inspiring sight. The town is rich with attractions, walking tracks, and activities for every visitor. A walk around the Kaikōura Peninsula is a must, where you can explore tide pools teeming with marine life, observe sea creatures basking on the rocks, and watch seabirds soaring above. Be sure to keep a respectful distance from the sleeping sea lions you might encounter along the way. Ohau Point is another highlight, where you can watch fur seals frolic in their natural environment. To delve into Kaikōura's fascinating history, visit Fyffe House. This historic whaler's cottage offers a glimpse into the town's whaling past and its evolution over the years. No trip to Kaikōura is complete without sampling the local seafood. Renowned for having some of the best fish and chips in the country, Kaikōura's eateries serve fresh catches straight from the morning's haul, ensuring a delicious and authentic dining experience. If you need a break from the action, unwind at Lavendyl Lavender Farm. Stroll through the fragrant lavender fields, relax in the serene atmosphere, and browse the gift shop for a variety of lavender products. Kaikōura seamlessly blends adventure, history, and relaxation, making it a perfect destination for travellers seeking a unique and enriching experience.

SUGGESTED ACTIVITY - Zipline & Native Forest Tour with EcoZip Kaikoura

Enjoy a scenic journey to Kaikōura's beachfront airfield, followed by a 4WD adventure crossing the braided Kahutara River to Rakanui Station. Take in panoramic views of rolling farmland, lush valleys, and snowcapped mountains before embarking on an exhilarating 5-zipline course, including twin lines for side-by-side rides. Learn fascinating local history from expert guides and enjoy a walk through native forest, with a chance to plant a tree during winter as part of Eco Zip's conservation program. An unforgettable eco-adventure awaits! It is important you read and understand the risks associated with this activity before travel. For more information, please see [here](#)

Your accommodation: Sudima Hotel Kaikōura

This state-of-the-art waterfront hotel in Kaikōura has a 4.5 star rating with an outstanding in-house restaurant, a bar and conference facilities.

Meals included: Breakfast



Day 9



SUGGESTED ACTIVITY - Ocean's Cabin with Whale Watch Kaikōura

Experience New Zealand's only marine-based whale-watching company. Whale Watch Kaikōura offers a once-in-a-lifetime, up-close encounter with the giant Sperm Whale. You are also likely to encounter New Zealand fur seals, dolphins, and albatross. Depending on the season you may also see Pilot, Blue, and Southern Right whales as well as migrating humpbacks. Often orcas can be spotted here and the world's smallest dolphin, the Hector's, occasionally makes an appearance.

Kaikōura to Christchurch

Travel down the coast before heading inland through the North Canterbury wine region - the Waipara Valley. If you've time on your hands we recommend taking a detour to Hanmer Springs for relaxing dip in its thermal pools. Arriving into Christchurch you'll see a new and improved city, steadily rising from the ruins of the 2011 and 2010 earthquakes.

Christchurch

Christchurch known in Māori as Ōtautahi, is the largest metro area in the South Island. Commonly referred to as New Zealand's "Garden City", Christchurch is home to one of the biggest public parks in the country, and beautiful botanic gardens. The city was hit with devastating earthquakes in 2010 and 2011, now the city crosses the line between its English heritage and a new modern architecture. To take in some arts and culture, pay a visit to the Canterbury Museum or the Christchurch Art Gallery. Take a step back in time with a tram around the city or punt along the Avon River. If tasting your way around the city is your means of travel, try out a cultural eating tour. A short drive from the CBD will lead you to the outskirts of the Banks Peninsula beachside suburb of Sumner or through the tunnel to Lyttelton Harbour which hosts fantastic markets on Saturday mornings.

Your accommodation: Scenic Hotel Cotswold

The Scenic Hotel Cotswold is just a few minutes walk to boutique shopping at Merivale and Hagley Park. The distinctive architecture of the Scenic Hotel Cotswold reflects Christchurch's image as the most English of cities outside of England.

Meals included: Breakfast



Day 10



Explore Christchurch

Following earthquakes that razed its centre and much of the outlying suburbs, Ōtautahi-Christchurch is well into a billion-dollar makeover. In the middle of the Canterbury Plains, bordering the Pacific Ocean, New Zealand's newest city is an ideal gateway to exploring the middle of the South. Go punting on the Avon River, take a historic tram ride, catch the gondola to the rim of an extinct volcano or do all three! See the world's only Cardboard Cathedral and for nature enthusiasts - wander the renowned Christchurch Botanic Gardens, or head to Oxford Terrace in the city to find a great spot to eat or drink. Drive an hour in any direction to ski, mountain bike, wine taste, whale watch, bungee jump or play golf. Take the winding Port Hills road to the French settlement of Akaroa & Banks Peninsula and tour the vines in Waipara for an authentic New Zealand wine-tasting experience.

SUGGESTED ACTIVITY - Christchurch Triple Pass - Tram, Punting and Gondola

Experience three of Christchurch's iconic attractions in one day: the Christchurch Tram, Christchurch Gondola, and Punting on the Avon River. The historic tram is a delightful way to explore the evolving inner city, taking in the various sights with the hop-on hop-off pass and learning about the city from the live commentary. You'll also enjoy a bird's eye view of Christchurch and the Canterbury region including the distant peaks of the Southern Alps when you ride the gondola cableway to the top of the Port Hills in Heathcote Valley. Punting on the Avon River takes you through the city's green belt: a relaxing way to explore what is affectionately known as the 'Garden City'.

SUGGESTED ACTIVITY - Ōtautahi City Meander with Amiki Cultural Food Tours

Discover the cultural richness of Ōtautahi Christchurch on this 75-minute guided walk. Begin with a traditional Māori welcome and hear ancestral tales of creation and connection. Stroll along laneways and the river, learning how Māori heritage is reflected in the city's rebuild. From mahinga kai traditions and stories of settlers to modern art and architecture, this tour celebrates Christchurch's diverse history and vibrant future, offering a unique way to explore the city's past and present.

Your accommodation: Scenic Hotel Cotswold

The Scenic Hotel Cotswold is just a few minutes walk to boutique shopping at Merivale and Hagley Park. The distinctive architecture of the Scenic Hotel Cotswold reflects Christchurch's image as the most English of cities outside of England.

Meals included: Breakfast



Day 11



Christchurch to Aoraki-Mt Cook National Park

Drive through the heart of the South Island, crossing the vast Canterbury plains. Catch your breath in Geraldine before continuing through Fairlie. Ascending Burkes pass you'll come to the picturesque town of Lake Tekapo. Follow the road and take in the view of Aoraki-Mt Cook (New Zealand's tallest mountain) from the shores of Lake Pukaki, known for its glacier fed turquoise blue colour. Continue along the lake to your final destination Aoraki-Mt Cook Village.

Aoraki-Mt Cook National Park

At 3754m Aoraki-Mt Cook is Aotearoa-New Zealand's highest mountain, located deep in the heart of the Southern Alps. As well as its impressive beauty, Aoraki-Mt Cook National Park is also home to a huge range of awe-inspiring sights and activities. Take to the air with Mt Cook Ski Planes for a scenic flight that includes a glacier landing. At around 27 kilometres long the Tasman Glacier is New Zealand's longest and a Glacier Explorers tour allows you to see its unique features up close.

There are many short hikes in and around the park and these are well signposted around the village. Those with an interest in the night sky should take a Big Sky Stargazing tour with the Hermitage Hotel. The region is considered to have one of the clearest night skies in the world and is one of the few gold-rated dark sky reserves worldwide.

Visit the Sir Edmund Hillary Alpine Centre for insight into this region's mountain climbing history. You'll also learn of Sir Ed's incredible achievements and his dedication to helping others around the world.

SUGGESTED ACTIVITY - Glacier Explorers

Experience 500-year-old icebergs up close on the Aoraki-Mt Cook terminal lake. The Glacier Explorers tour is the only one of its kind in New Zealand and one of only three in the world! Very few glaciers terminate into lakes and even fewer of them are accessible. See towering ice cliffs and floating icebergs from the safety of a specially designed boat. These boats provide a safe way to view unseen and inaccessible areas of New Zealand's largest glacier The Tasman.

SUGGESTED ACTIVITY - Sir Edmund Hillary Alpine Centre Museum and Theatre Explorer Pass with Hermitage

A tribute to New Zealand's Sir Edmund Hillary, a humanitarian, ambassador, and one of the world's greatest explorers. The centre showcases the Aoraki Mount Cook region, the history of climbing, and early transport used throughout the region. This comprehensive museum details the life of Sir Edmund Hillary, the Hermitage, and provides access to the 126-seat custom-designed theatre. Check out the daily film schedule which includes 3D Movies, documentaries, and 360-degree digital dome features.

Your accommodation: Hermitage Hotel Room Mount Cook View

The Hermitage Hotel ringed by magnificent snow-capped peaks of the Southern Alps, is a world-renowned tourist destination and has been an icon of superior accommodation and dining since 1884.

Meals included: Breakfast



Day 12



Aoraki Mt Cook National Park to Queenstown

Leaving the alpine region of Aoraki Mt Cook, you'll travel through the lakeside town of Twizel, then a little further to Omarama the gliding capital of New Zealand. Continue on over the Lindis Pass, one of New Zealand's highest roads with a summit of 971 metres. Arrive in the quaint village of Tarras, then continue on a short way to the historic Bendigo Reserve, one of Otago's original gold mining settlements. Follow the road to Cromwell, and keep going through the sheer cliffs of the Kawarau Gorge towards Gibbston, one of New Zealand's premier wine growing regions. See the historic Kawarau Bridge where you can bungy jump or relax and watch others take the plunge. Approaching Queenstown, the Remarkables mountain range comes into view as you arrive into the adventure capital of New Zealand.

Queenstown

Queenstown known in Māori as Tāhuna, is home to many adrenaline-inducing activities. Nestled on the shores of Lake Wakatipu, this alpine town has very distinct seasons, and most adrenaline-filled activities can be accessed year-round. Queenstown is home to jet boating, bungy jumping, rafting, skydiving, paragliding, and even indoor thrills. If you want that rush - head out on the Shotover Jet, dive off the Nevis Bungy, freefall on the Canyon Swing, or Zip line the Gondola. While arguably the brightest gem in New Zealand's crown, Queenstown offers far more than an action-packed getaway. If you're looking for a slightly slower pace, there are plenty of recreational activities, including hiking and biking trails to explore, guided tours, boat cruises, scenic flights, or spa and wellness options to help you get away. Head to the lakefront, eat at one of the al fresco eateries, and soak up the local vibes; catch a ride on the iconic 100-year-old steamship the TSS Earnslaw; or take the Skyline Gondola and enjoy bird's-eye views of the Remarkables mountain ranges and Lake Wakatipu. Pack a picnic and go for a hike, only 20 minutes from Central Queenstown, Coronet Peak opens for summer sightseeing. You can ride the Peak Gondola to the top for panoramic views and hike the trails, or go for a bike ride on many excellent biking trails. In winter, Queenstown becomes a world-class winter resort, with four ski areas and a range of activities, bars, restaurants, and ways to relax and unwind.

SUGGESTED ACTIVITY - Gondola and 3 Luge Rides with Skyline Queenstown

In the heart of Queenstown, located 450 metres above town in the Ben Lomond Scenic Reserve is the Skyline Complex. A gondola ride to the summit makes for awe-inspiring views of the city surround. Arrive at the complex and wander the outside viewing decks for a picture perfect outlook. Then onto the Luge! The 800 metre luge track offers an exhilarating journey through banked corners, tunnels and dippers.

SUGGESTED ACTIVITY - TSS Earnslaw Cruise and Walter Peak Gourmet BBQ Dinner

Enjoy a quintessential Kiwi experience, a delicious gourmet BBQ buffet meal, and a farm demonstration in a stunning lakeside setting. Take in the stunning views of Lake Wakatipu and its surroundings as you cruise across the lake to the historic Walter Peak high country farm aboard the TSS Earnslaw Steamship. Enjoy the ambiance of the heart of the stately homestead while your Colonel's Homestead Restaurant chef prepares a gourmet BBQ dinner. Your seasonal menu includes an extensive selection of local New Zealand produce, including succulent meats and a selection of delicious vegetables and salads. Complete your meal with your choice of delicious desserts, or New Zealand cheeses. After dinner, watch the farm dogs in action with a sheep-herding demonstration and say hello to the other farm animals. Finally, cruise home under the southern stars and enjoy the fresh night air as the lights of Queenstown draw ever closer.

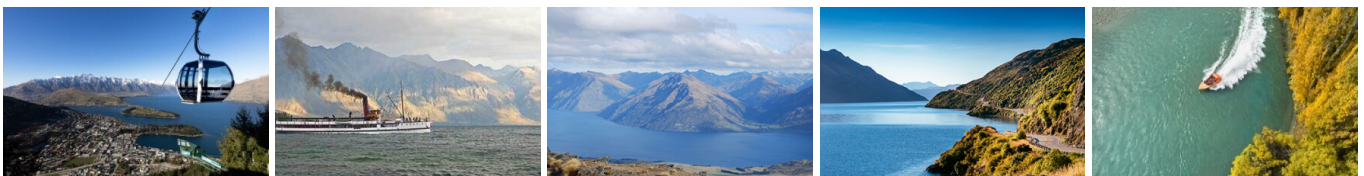
Your accommodation: Copthorne Hotel & Apartments Queenstown Lakeview

Copthorne Hotel & Apartments Queenstown Lakeview is located on Frankton Road, the main arterial route into Queenstown - With the centre of town only a short 10-minute stroll away.

Meals included: Breakfast



Day 13



Explore Queenstown

Well-known as New Zealand's 'adventure capital', Queenstown is home to a range of adventures, from the world's first and most famous bungy jumps to jet boat thrills, white-water rafting, and skydiving. However, Queenstown offers far more than a fast-paced, action-packed holiday. Settled on the shores of beautiful Lake Wakatipu beneath a soaring panorama of the Remarkables Mountain Range, this alpine town is surrounded by many historic, gastronomic, and scenic wonders. Take a stroll through the beautiful lakefront parks and gardens, browse through market stalls on weekends, dine in wonderful al-fresco restaurants, or ride on the 100-year-old historic Steamship - TSS Earnslaw to Walter Peak Station. Take the Queenstown Gondola up to Bob's Peak and soak up the panoramic views of the magnificent lake and mountain ranges. And after all of that, if you do want the adrenaline rush, Queenstown is known for taking your pick from the Shotover Jet, Canyon Swing, Zipline, Luge, or Heli-hike.

SUGGESTED ACTIVITY - Shotover Jet Canyon Jet Boat Ride

Shotover Jet is the only company permitted to operate in the Shotover River Canyons. It's a thrilling ride! Skim past rocky outcrops at close range in your Shotover Jet 'Big Red', as you twist and turn through the narrow canyons at breathtaking speeds. And a major highlight - hold tight for the world-famous Shotover Jet full 360-degree spins! It is important you read and understand the risks associated with this activity. For more information please see [here](#).

SUGGESTED ACTIVITY - Appellation Boutique Wine Tour

Experience a tasting journey through three of Central Otago's incredibly scenic and varying wine sub-regions; Gibbston, Bannockburn and Cromwell. Visit three boutique vineyards, tasting their unique cool climate wines and discover why the Central Otago region has become world-renowned in its own right. Indulge at a fourth vineyard restaurant for a platter-style lunch, savouring the finest and freshest produce, accompanied with a wine flight.

There will also be an opportunity to retrace history when you stroll through the charming historical settlement of Old Cromwell.

Your accommodation: Copthorne Hotel & Apartments Queenstown Lakeview

Copthorne Hotel & Apartments Queenstown Lakeview is located on Frankton Road, the main arterial route into Queenstown - With the centre of town only a short 10-minute stroll away.

Meals included: Breakfast



Day 14



Return your vehicle to Queenstown Airport

Explore more of Queenstown before dropping your rental car at the airport depot and continuing your onward journey.

Farewell from Aotearoa-New Zealand

Bid farewell to Aotearoa-New Zealand, taking with you unforgettable memories of its breathtaking landscapes and incredible adventures. In Maori, it is said mā te wā, which is not goodbye, it is see you soon!

Tour details

Departures:	Daily
Tour type:	Nationwide Self Drive
Starts:	Auckland
Finishes:	Queenstown
Tour length:	14
Accommodation:	Hotel 3 star
Car/transport type:	

Included activities

Includes	All breakfasts
Includes	Private airport transfers
Includes	Interislander ferry crossing

Accommodation summary

Day 1	Edit Auckland Central
Day 2	Edit Auckland Central
Day 3	Sudima Lake Rotorua
Day 4	Sudima Lake Rotorua
Day 5	Hotel Ibis Wellington
Day 6	Hotel Ibis Wellington
Day 7	Carmore Chateau Marlborough
Day 8	Sudima Hotel Kaikōura
Day 9	Scenic Hotel Cotswold
Day 10	Scenic Hotel Cotswold
Day 11	Hermitage Hotel Room Mount Cook View
Day 12	Copthorne Hotel & Apartments Queenstown Lakeview
Day 13	Copthorne Hotel & Apartments Queenstown Lakeview