

Southern Highlights Tour including Milford Sound

Starting in Christchurch, travelling into Mackenzie county to Lake Tekapo. You will pass Lake Pukaki with views of Mt Cook on route to Queenstown. Your first night in Queenstown you'll cruise Lake Wakatipu to Walter Peak High Country Station for a farm show and gourmet BBQ. From Queenstown you will enjoy a spectacular flight to Milford Sound. Once in Milford sound you will take a scenic nature cruise, before flying off to Mt Aspiring National Park for the amazing Dart River Safari. Next day you will be travelling north stopping at Franz Josef before heading back to Christchurch via the Tranz Alpine Train.

Starts in: Christchurch
Finishes in: Christchurch
Length: 7days / 6nights
Accommodation: Motels
Can be customised: Yes

This itinerary can be customised to suit you perfectly. We can add more days, remove days, change accommodations, mix it up, add activities to suit your interests or simply design and create something from scratch. Call us today to get your custom New Zealand itinerary underway.



Inclusions:

Includes: Late model rental cars
Includes: Unlimited kms
Includes: Airport & ferry terminal rental car fees
Includes: Comprehensive tour pack (detailed itinerary, driving instructions, map/guidebooks, brochures)
Included activity: Private transfer Christchurch International Airport to your accommodation
Included activity: TSS Earnslaw Cruise and Walter Peak Gourmet BBQ Dining
Included activity: TranzAlpine Scenic Train: Greymouth to Christchurch
Included activity: Private transfer accommodation to Christchurch Airport

Includes: Fully inclusive rental car insurance (excess may apply)
Includes: GPS navigation
Includes: Additional drivers
Includes: 24/7 support while touring New Zealand
Included activity: Electronic Travel Guide and In-Country Support App
Included activity: Milford Sound Fly, Cruise, Fly with Milford Sound Scenic Flights
Included activity: Shared Transfer from the Railway Station to a City Hotel with Christchurch Touring Company
: 1 special dinner

Day 1



Private transfer Christchurch International Airport to your accommodation

On arrival, you will be met by a private driver and transferred to your Christchurch accommodation.

Welcome to Christchurch City

After checking into your accommodation, the rest of the day is yours to explore at your leisure. Christchurch City is the largest city on the South Island. Often referred to as the Garden City it boasts one of the largest public parks in the country and the city centre is full of very impressive stone buildings reminiscent of the English university towns.

Your accommodation: Terra Vive Luxury Suites and Apartments

Terra Vive Luxury Suites and Apartments offer luxury accommodation in the heart of Christchurch City. Situated within the beautiful tree-lined street of Bealey Avenue, Terra Vive is ideally located in close proximity to the shops, restaurants and cafes.



Day 2



Collect your rental car

This tour can be priced with any of the rental cars available in our fantastic range, from economy hatchbacks to prestige saloons and SUV's.

Christchurch to Lake Tekapo

Today you head into the heart of the South Island. Crossing the vast Canterbury Plains along the inland scenic route the first township of Geraldine offers an ideal refreshment stop before you head into Mackenzie country.

Passing through places such as Beautiful Valley it's not hard to understand where the names originate. Ascending Burkes Pass and onto the high country plateau and the picturesque town of Lake Tekapo, the first of the large Southern Lakes. It's a great place to take a scenic flight, enjoy a guided horse trek, a boat trip on the pristine lake or just enjoy the magnificent views.

SUGGESTED ACTIVITY - Tekapo Springs Hot Pools

Tekapo Springs offers three adjoining main Hot Pools for you to sit back, relax and enjoy yourself while looking out to the beautiful Two Thumb range and stunning Lake Tekapo. Pool temperatures range from forty degrees celsius to thirty-six degrees celsius and each pool offers something different - massage jets to assist in taking away any aches and pains and fountains to splash under.

SUGGESTED ACTIVITY - Dark Sky Project Summit Experience

Earth and Sky Stargazing tour departs nightly from the office in the Lake Tekapo township. Travel to the Mt John observatory high above the village where you will explore features of the majestic Southern Sky. Earth and Sky provide the equipment and the guidance, all you need to bring are keen eyes, warm clothes and a desire to see, learn, and experience.

Navigating your way through the Southern Sky using various telescopes and the naked eye, you will see amazing sights such as our own Milky Way Galaxy, the Southern Cross, Alpha-Centauri - our closest neighbouring star at only 4.3 light years away, and Sirius - the brightest star in our sky.

Behold and learn about our closest neighbouring galaxies, the Magellanic Clouds, which grace our night sky along with constellations such as Orion the Hunter and Scorpius.

You may also have the opportunity to see star clusters like the beautiful Jewel Box; awe inspiring planets; nebulae, immense clouds of gas and dust; and distant galaxies which test the limits of human imagination.

Your accommodation: Lake Tekapo Village Motel

Lake Tekapo Village Motel is conveniently located in the Lake Tekapo Village Centre, with dining, shopping and services all within easy walking distance. The closeness to amenities and superb views will make your stay very special.



Day 3



Lake Tekapo to Queenstown

Lake Pukaki is just another 30 minutes drive from Lake Tekapo and as you approach the lake you are often rewarded with spectacular views the full length of the lake and into Aoraki Mount Cook National Park. At 3754 metres Aoraki Mount Cook is New Zealand's highest mountain and the peak can often be seen from the visitor centre at the southern end of Lake Pukaki. Twizel, just south of Mount Cook was the location of many Lord of the Rings movie scenes and a little further on is Omarama, the gliding capital of New Zealand. Wrinkly Rams is a local cafe with great coffee and fresh homemade food. The Lindis Pass is one of New Zealand's highest roads with the summit reaching 971 metres. The tussock covered hills offer an unusual contrast as you pass from the Mackenzie Basin and into Central Otago.

Bendigo, just off the main highway, was one of Otago's original gold mining settlements and well marked paths will guide you to explore the remains of stone cottages and other buildings from this bygone era.

Cromwell sits at the head of the Kawarau Gorge. Cromwell old town has restored buildings from before the valley was flooded to create Lake Dunstan for the hydro systems. The sheer cliffs of the Kawarau Gorge guide you towards Queenstown and Gibbston - one of New Zealand's premier wine growing regions. At the famous historic Kawarau Bridge you can take a bungy jump or just watch others if you would rather. Approaching Queenstown the impressive Remarkables mountain range come into view and then beautiful Lake Wakatipu as you head towards the alpine resort town of Queenstown, the adventure and activity capital of New Zealand.

SUGGESTED ACTIVITY - Shotover Canyon River Jet Boat Adventure

Riding the iconic 'Big Red' Jet Boat through the narrow Shotover Canyon is an exhilarating experience not to be missed. Your skilled jet boat driver pushes the boat to 85 kph, skimming across shallow water and past towering canyon walls. This 25 minute white water ride includes 360 degree spins and maximum thrills.

TSS Earnslaw cruise to Walter Peak including gourmet BBQ dinner and a farm tour

Enjoy a quintessential Kiwi experience, a delicious gourmet BBQ buffet meal and a farm demonstration in a stunning lakeside setting. Take in the stunning views of Lake Wakatipu and its surroundings as you cruise across the lake to the historic Walter Peak high country farm aboard the TSS Earnslaw Steamship.

Enjoy the ambience of the heart of the stately homestead while your Colonel's Homestead Restaurant chef prepares a gourmet BBQ dinner. Your seasonal menu includes an extensive selection of local New Zealand produce, including succulent meats and a selection of delicious vegetables and salads. Complete your meal with your choice of delicious desserts, New Zealand cheeses, tea and coffee.

After dinner, watch the farm dogs in action with a sheep-herding demonstration and say hello to the other farm animals. Finally, cruise home under the southern stars and enjoy the fresh night air as the lights of Queenstown draw ever closer.

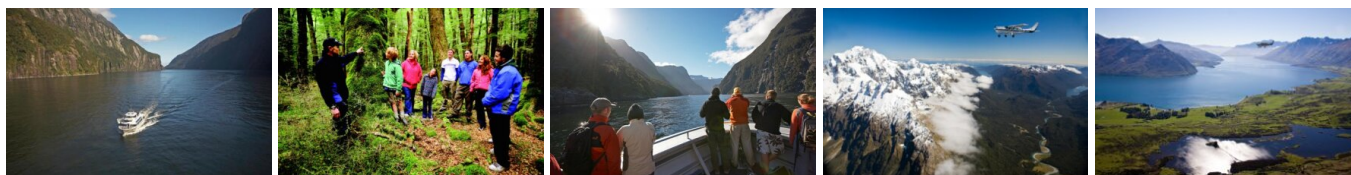
Your accommodation: Scenic Suites Queenstown

Scenic Suites Queenstown offers guests exquisite style, comfort and spectacular views over Lake Wakatipu and the Southern Alps. The hotel prides itself on its four star hospitality that will make your stay in Queenstown even more memorable.

Meals included: Speciality Dinner



Day 4



Milford Sound Fly, Cruise, Fly with Milford Sound Scenic Flights

Fly above the rugged backcountry of Central Otago. Witness what the power of nature has created over the years, as you journey over Mt Aspiring National Park and the world heritage listed Fiordland National Park. Then, take to the water on a cruise through the iconic Milford Sound before flying back over even more stunning landscapes.

Your accommodation: Scenic Suites Queenstown

Scenic Suites Queenstown offers guests exquisite style, comfort and spectacular views over Lake Wakatipu and the Southern Alps. The hotel prides itself on its four star hospitality that will make your stay in Queenstown even more memorable.



Day 5



Queenstown to Franz Josef Glacier via Wanaka

From Queenstown you'll cross the Crown Range, the highest sealed road in New Zealand to arrive in the Alpine town of Wanaka, gateway to Mt Aspiring National Park. Skirting the shores of both Lake Wanaka and Hawea, you will enter the small town of Makarora. Stop at Blue Pools for a 1-hour return walk through the native beech forest to a glacier-fed swimming hole. Continue on through the remote seaside settlement of Haast before heading up the wild West Coast highway you pass through ancient temperate rainforests while getting sneak peeks of the wild coast beaches occasionally. Paringa Salmon Farm is worth a stop to stretch your legs, feed the fish, and stop for lunch and refreshments. Keep heading North and be sure to enjoy the view of the ever-changing towering snowcapped Southern Alps Mountain Range. Fox Glacier welcomes you first, then comes your destination for the night Franz Josef township.

SUGGESTED ACTIVITY - Twin Glacier Scenic Helicopter Flight with The Helicopter Line

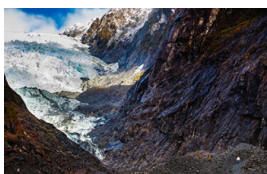
Take a spectacular scenic flight over two of New Zealand's most famous glaciers. Land at the head of one and view the incredible sight of this frozen river as it winds its way through ancient carved valleys. Should weather not be suitable to take this flight you are able to transfer your booking onto a similar tour on any of the Helicopter Line's operations in Queenstown or Mt Cook.

Your accommodation: Aspen Court Franz Josef

Aspen Court Franz Josef is set amongst native bush providing a very peaceful ambience. Internally the motel units are large, practical and modern with all containing quality furnishings and fittings.



Day 6



Franz Josef to Greymouth Train Station

Today head north along the mighty West Coast highway you pass through ancient temperate rainforests while getting sneak peeks of the wild coast beach occasionally. Whataroa is the next town where you can see one of the world's rarest birds, the New Zealand white heron or Kotuku nest at the Waitangi Roto Nature Reserve, and guided tours from October to March will take you there.

Ross is the site of an old gold mining town and some of the old buildings and workings remain. In fact, Ross is still home to one of the few working gold mines left in New Zealand and the local information center offers you the chance to pan for gold.

Hokitika is a great place to explore craft and gift stores and head to the coast and take in the endless sea views. The Jade or Greenstone on offer in Hokitika is probably some of the best you will see in the country. The Hokitika Gorge is located 45 minutes inland and offers turquoise waters flowing through a narrow gorge. A great short walk will deliver you to this piece of paradise.

Continue on to Greymouth, the largest town on the West Coast and the starting point for the next leg of your journey the TranzAlpine Scenic Train. Drop your rental car at the Greymouth Train Station depot located at the train station building before boarding your train to Christchurch.

TranzAlpine Scenic Train: Greymouth to Christchurch

Considered one of the world's great train journeys, the TranzAlpine Scenic Train takes you from Greymouth to Christchurch. You'll travel across the South Island from the west to the east coast through Arthur's Pass National Park. From the comfort of your carriage see lush beech forest, deep river valleys and the spectacular peaks of the Southern Alps. Descend to the windswept Canterbury Plains before arriving in the city of Christchurch.

Shared Transfer from the Railway Station to a City Hotel with Christchurch Touring

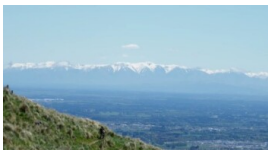
On arrival at the Christchurch railway station, you will be met by a driver and transferred to your Christchurch accommodation.

Your accommodation: Terra Vive Luxury Suites and Apartments

Terra Vive Luxury Suites and Apartments offer luxury accommodation in the heart of Christchurch City. Situated within the beautiful tree-lined street of Bealey Avenue, Terra Vive is ideally located in close proximity to the shops, restaurants and cafes.



Day 7



Private transfer accommodation to Christchurch Airport

A private transfer will collect you from your accommodation and transfer you to Christchurch Airport in time for your departing flight.

Tour details

Departures:	Daily
Tour type:	South Island Self Drive
Starts:	Christchurch
Finishes:	Christchurch
Tour length:	7
Accommodation:	Motels
Car/transport type:	

Included activities

Includes	Private train station transfers
Includes	Private airport transfers
Includes	TranzAlpine Train from Greymouth to Christchurch
Includes	Milford Sound Fly-Cruise-Fly and Dart River combo
Includes	TSS Earnslaw cruise and dinner at Walter Peak high country farm, Queenstown

Accommodation summary

Day 1	Terra Vive Luxury Suites and Apartments
Day 2	Lake Tekapo Village Motel
Day 3	Scenic Suites Queenstown
Day 4	Scenic Suites Queenstown
Day 5	Aspen Court Franz Josef
Day 6	Terra Vive Luxury Suites and Apartments