



Auckland to Christchurch Hiking Exploration

Experience the world-renowned Tongariro Crossing, one of the finest day hikes on the planet. From there, travel south, cross the Cook Strait, and journey along the scenic Pacific Coast to Kaikōura and on to Christchurch. Continue to Aoraki/Mount Cook National Park before heading further south into the breathtaking Southern Lakes region. Here, enjoy a fully guided 3-day / 2-night walk on the iconic Routeburn Track. After returning to Queenstown, venture north to explore the glacier region, then conclude your journey with a spectacular ride aboard the TranzAlpine Scenic Train back to Christchurch.

The rates displayed for this tour are based on a per person occupancy in the Routeburn Multishare Rooms. These rooms have shared bathroom facilities and are in rooms with up to 6 pax on the Milford Track. For double, twin or single room occupancy, kindly contact our sales consultants.

Starts in: Auckland
 Finishes in: Christchurch
 Length: 15days / 14nights
 Accommodation: Hotel 4 star
 Can be customised: Yes

This itinerary can be customised to suit you perfectly. We can add more days, remove days, change accommodations, mix it up, add activities to suit your interests or simply design and create something from scratch. Call us today to get your custom New Zealand itinerary underway.



Inclusions:

Includes: Late model rental cars

Includes: Unlimited kms

Included activity: Private Transfer Auckland Airport to your Auckland Accommodation with Tourcorp

Included activity: Routeburn Track 3 Day/2 Night Guided Walk with Ultimate Hikes

Included activity: Shared Transfer from Christchurch Train Station to Christchurch CBD Accommodation with Christchurch Touring Company

Included activity: Sky Waka Gondola Sightseeing Trip with Whakapapa - Open Dated Voucher

Included activity: Interislander Ferry Wellington to Picton with Premium Plus Lounge

: Meals included: 14 breakfasts, 4 lunches, 3 dinners

Includes: Fully inclusive rental car insurance (excess may apply)

Includes: Afterhours emergency support while touring

Included activity: Electronic Travel Guide and In-Country Support App

Included activity: TranzAlpine Scenic Train: Greymouth to Christchurch

Included activity: Private Transfer from Christchurch Accommodation to Christchurch Airport with Christchurch Touring Company

Included activity: Private Guided Tongariro Alpine Crossing with Adrift

Included activity: Private Transfer Queenstown Domestic Airport to Accommodation (LSQ)

Day 1



Private Transfer Auckland Airport to your Auckland Accommodation with Tourcorp

You will be met at the Auckland airport by the driver and transferred to your Auckland accommodation.

SUGGESTED ACTIVITY - Harbour Sailing Cruise with Explore

Enjoy the City of Sails from the water on a relaxed harbour sailing yacht. This cruise offers a uniquely local experience experiencing the harbour under sail with a small vessel with an intimate and engaging atmosphere. View the stunning city sights while sailing on the inner Waitemata Harbour. Sail where the wind takes us while enjoying Auckland's city highlights; including sailing under the Harbour Bridge and other well-known landmarks along the harbour's edge. The crew's local knowledge will give you the best harbour sailing experience Auckland has to offer. Become the crew and help participate with the sailing experience take the helm while you carve through the water, or if you prefer just sit back and relax above deck.

SUGGESTED ACTIVITY - Wētā Workshop Unleashed

Explore worlds of horror, sci-fi and fantasy in the making. An exciting, realistic, and authentic experience, with three fully developed and original film concepts: A nail-biting horror Fauna, a fantasy epic Age of the Ever-Clan, and the mind-bending sci-fi Origins.

A 90-minute guided experience through fully themed environments, including immersive horror, fantasy, and sci-fi story worlds. Be immersed by a specially-created unique sweeping cinematic soundtrack, animatronic creatures, physical and digital interactives, hyper-realistic sculpted giants and characters, a horror house experience, and much more.

SUGGESTED ACTIVITY - All Blacks Experience

See what it takes to make, shape and be an All Black. Experience first-hand the excitement and emotion of game day. Discover the stories behind some of world rugby's most famous players, moments, and matches.

This guided experience introduces you to the game of rugby including state-of-the-art displays combining sound, images, interactive technology, and hands-on activities. Discover New Zealand's deep passion for our national sport, experience the full force of the All Blacks haka, and tackle interactive zones where you can try out your kicking, catching, line-out, and accuracy skills against legendary All Blacks.

Your accommodation: SkyCity Hotel Auckland

This modern and spacious hotel allows you to relax in style while enjoying the world-class casino, more than 20 restaurants, cafes and bars, a theatre, free live entertainment on selected nights and the iconic Sky Tower - all right on your doorstep!



Day 2



Collect Rental Car

Choose a car to best suit your needs from our fantastic rental car range. From compact economy, hatchbacks to prestige SUVs.

Car Instructions

On collection of your rental car, you will be required to sign a rental agreement and provide a credit card for a security bond authorisation. Remember, the bond is only authorised, not charged, at this stage. While your rental rate may include coverage for mechanical breakdowns (please verify your specific car inclusions), you may also have the option to purchase roadside assistance for non-mechanical issues. All drivers must present a physical credit card, valid driving license and passport to be added to the agreement, with potential additional charges for extra drivers. Debit cards may be used on select vehicles. If you are presenting an international drivers license, this must be accompanied by the original domestic license. Drivers under 21 are not permitted, and those aged 21-24 may face a surcharge, both payable directly to the rental company. For detailed information, please refer to your rental car inclusions. See this important information if you are traveling between the North and South Islands on the ferry

Auckland to Waimarino-National Park

Today you will leave Auckland and travel south through the rolling pastures of Waikato. Take the time to detour to Waitomo and experience its network of underground caves before heading inland to the Central Plateau and arriving at Tongariro National Park. A world heritage site, Tongariro is home to three active volcanoes Ruapehu, Tongariro and Ngauruhoe as well as a host of activities including hiking, fishing, climbing, mountain biking and skiing.

Sky Waka Gondola Sightseeing Trip with Whakapapa - Open Dated Voucher

During the summer months you can take advantage of the skifield facilities and take the gondola over Mt Ruapehu's otherworldly terrain. You'll travel to an altitude of 2020 metres where you'll be treated to magnificent views of Tongariro National Park, including the iconic peaks of Mt Ruapehu, Mt Tongariro and Mt Ngauruhoe, the latter featured as Mt Doom in the Lord of the Rings movies.

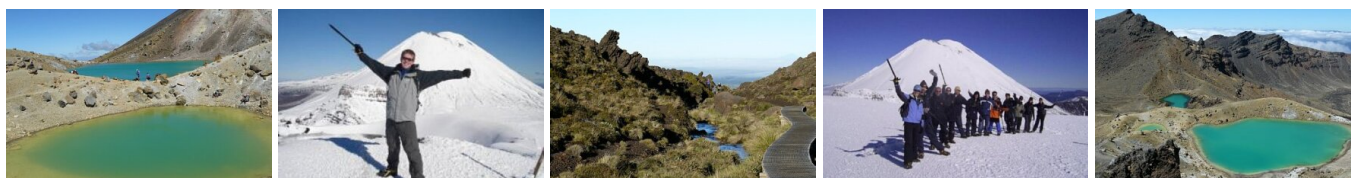
Your accommodation: The Park Hotel Ruapehu

Located in the centre of National Park and is the ideal base for exploring New Zealand's Tongariro Crossing. The on-site Spiral Restaurant & Bar is full of character and is open daily. The outdoor hot tubs, courtyard hammocks & open fireplaces are complimentary for guests and offer the perfect opportunity to relax and unwind after a day of adventure in the Ruapehu region.

Meals included: Breakfast



Day 3



Private Guided Tongariro Alpine Crossing with Adrift

For the exclusive guided trips you'll be provided with a really personal, informative and friendly day you will never forget. This trip is tailored so that group sizes are small, your guides are well informed and are able to provide you with an amazing experience. Your guide will also 'work behind the scenes' constantly assessing the weather and track conditions, timing for your Ketetahi personalised transport pick-up at the end of your hike, and other little details that will maximise your enjoyment. They can also tailor the trip to accommodate different fitness levels and know a few tricks about avoiding weather exposed or crowded areas. It is important you read and understand the risks associated with this activity. For more information see [here](#).

Your accommodation: The Park Hotel Ruapehu

Located in the centre of National Park and is the ideal base for exploring New Zealand's Tongariro Crossing. The on-site Spiral Restaurant & Bar is full of character and is open daily. The outdoor hot tubs, courtyard hammocks & open fireplaces are complimentary for guests and offer the perfect opportunity to relax and unwind after a day of adventure in the Ruapehu region.

Meals included: Breakfast, Lunch



Day 4



Waimarino-National Park to Wellington

Leaving Waimarino, you will drive past the military town of Waiouru which hosts the Army Museum, an incredible collection of New Zealand's military history and a memorial to its servicemen. Heading south you pass through the rural towns of Taihape, Mangaweka and Bulls before arriving on the Kapiti Coast. The coastal seaside towns of Paraparaumu, Paekakariki and Plimmerton are worth a short detour before arriving in the capital city of Wellington. Plan to take most of the day for this drive.

Wellington City is New Zealand's capital. It sits on a wonderful deep natural harbour and is surrounded by bush-clad hills. The city centre itself is quite compact (only around 1 square kilometre) and so exploring on foot is relatively easy. From your city centre accommodation you can easily stroll the cafes and restaurants around Courtenay Place and if you arrive early enough New Zealand's national museum, Te Papa, is also close by.

Your accommodation: Bolton Hotel Wellington

The Bolton Hotel offers contemporary apartment-style accommodation in the heart of Wellington. Just steps from the Parliament buildings and central business district, Bolton Hotel is conveniently close to the best of the city's shops, cafes and restaurants and is within walking distance of Wellington's vibrant waterfront.

Meals included: Breakfast



Day 5



Return your rental car

Return your rental vehicle to your designated depot before your next adventure.

Interislander Ferry Wellington to Picton with Premium Plus Lounge

The 92 km ferry journey between Wellington and Picton, taking around 3 hours, is hailed as one of the world's most beautiful ferry rides. Departing Wellington Harbour, you'll pass landmarks like Pencarrow Head with New Zealand's oldest lighthouse, Red Rocks' seal colony, and Oterangi Bay, famous for its record wind speed. From the Cook Strait, marvel at views of the Kaikōura Ranges and spot dolphins and seabirds. An hour of the trip winds through the stunning Marlborough Sounds, featuring bush-clad mountains, tranquil bays, and crystal-clear waters—a photographer's dream. The journey concludes in the charming town of Picton at the end of Queen Charlotte Sound. When not soaking up the views from the deck, relax in the Premium Plus lounge, offering complimentary drinks, snacks, internet, and luxurious seating for the most comfortable way to cross the Cook Strait.

Collect your rental car on arrival to Picton

Collect your rental car on arrival into the Picton ferry terminal. See [here](#) for the full range of rental cars available for this tour.

Collect Rental Car

Choose a car to best suit your needs from our fantastic rental car range. From compact economy, hatchbacks to prestige SUVs.

Picton to Kaikoura

From Picton head south on State Highway One towards Blenheim, and the wine-producing region of Marlborough. Ideally located to enjoy an afternoon sampling the local produce, stop for a guided wine tour with Full Day Marlborough Wine Tour. Crossing the dry hills of the Marlborough ranges you head towards one of the most spectacular coastlines of the South Island, the Kaikōura Coast. The road hugs the shore for around 50 kilometres and offers many chances to view the native wildlife such as seabirds and New Zealand fur seals. To the east is the Pacific Ocean and to the west you'll follow alongside the Kaikōura Ranges before arriving into the bustling Kaikōura Township.

Your accommodation: Bendamere House B&B

Bendamere House B&B has quality ensuite rooms, detached from the main house adding to the privacy and comfort, with superb views overlooking the Pacific Ocean and Seaward Kaikōura mountain range.

Meals included: Breakfast



Day 6



SUGGESTED ACTIVITY - Captains Cabin Experience with Whale Watch Kaikoura

The Captain's Cabin is situated in the wheelhouse alongside the skipper and watchkeeper. This cabin provides guests with exclusive access to the skipper as they go about their duties as well as a dedicated guide for the duration of the tour. There is a maximum of 12 passengers, giving a more intimate, comfortable, and modern setting.

Kaikōura to Christchurch

Travel down the coast before heading inland through the North Canterbury wine region - the Waipara Valley. If you've time on your hands we recommend taking a detour to Hanmer Springs for relaxing dip in its thermal pools. Arriving into Christchurch you'll see a new and improved city, steadily rising from the ruins of the 2011 and 2010 earthquakes.

Christchurch

Christchurch known in Māori as Ōtautahi, is the largest metro area in the South Island. Commonly referred to as New Zealand's "Garden City", Christchurch is home to one of the biggest public parks in the country, and beautiful botanic gardens. The city was hit with devastating earthquakes in 2010 and 2011, now the city crosses the line between its English heritage and a new modern architecture. To take in some arts and culture, pay a visit to the Canterbury Museum or the Christchurch Art Gallery. Take a step back in time with a tram around the city or punt along the Avon River. If tasting your way around the city is your means of travel, try out a cultural eating tour. A short drive from the CBD will lead you to the outskirts of the Banks Peninsula beachside suburb of Sumner or through the tunnel to Lyttelton Harbour which hosts fantastic markets on Saturday mornings.

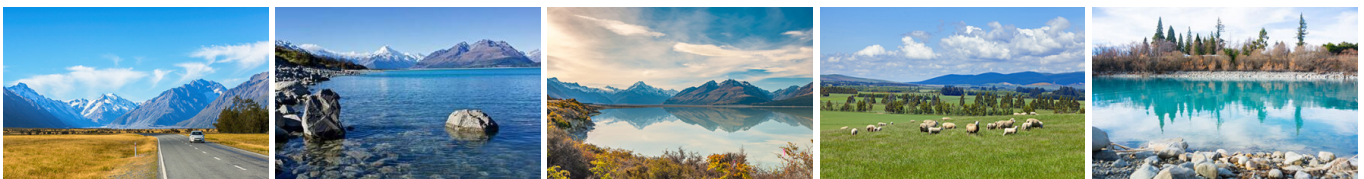
Your accommodation: The George Hotel

The George is the essence of supreme comfort. The award-winning 5 star hotel is opposite Hagley Park and just a few minutes stroll from the Botanic Gardens. It also has an award-winning restaurant, 50 Bistro onsite.

Meals included: Breakfast



Day 7



Christchurch to Aoraki-Mt Cook National Park

Drive through the heart of the South Island, crossing the vast Canterbury plains. Catch your breath in Geraldine before continuing through Fairlie. Ascending Burkes pass you'll come to the picturesque town of Lake Tekapo. Follow the road and take in the view of Aoraki-Mt Cook (New Zealand's tallest mountain) from the shores of Lake Pukaki, known for its glacier fed turquoise blue colour. Continue along the lake to your final destination Aoraki-Mt Cook Village.

Walking Track in Aoraki-Mt Cook National Park

Aoraki-Mt Cook Village offers a variety of short scenic walks suitable for all ages and fitness levels. Start your adventure at the Department of Conservation Information Centre, where you can learn about track conditions, local history, and the area's wildlife. Here are a few popular walks to explore: Bowen Bush Walk: 10-minute return Glencoe Walk: 10-minute return Red Tarns Track: 2-hour return Kea Point Walk: 2-hour return Sealy Tarns Track: 3 - 4 hours return

SUGGESTED ACTIVITY - Glacier Explorers

Experience 500-year-old icebergs up close on the Aoraki-Mt Cook terminal lake. The Glacier Explorers tour is the only one of its kind in New Zealand and one of only three in the world! Very few glaciers terminate into lakes and even fewer of them are accessible. See towering ice cliffs and floating icebergs from the safety of a specially designed boat. These boats provide a safe way to view unseen and inaccessible areas of New Zealand's largest glacier The Tasman.

Your accommodation: Hermitage Hotel, Aoraki Wing Premium

The Hermitage Hotel ringed by magnificent snow-capped peaks of the Southern Alps, is a world-renowned tourist destination and has been an icon of superior accommodation and dining since 1884.

Meals included: Breakfast



Day 8



Aoraki Mt Cook National Park to Queenstown

Leaving the alpine region of Aoraki Mt Cook, you'll travel through the lakeside town of Twizel, then a little further to Omarama the gliding capital of New Zealand. Continue on over the Lindis Pass, one of New Zealand's highest roads with a summit of 971 metres. Arrive in the quaint village of Tarras, then continue on a short way to the historic Bendigo Reserve, one of Otago's original gold mining settlements. Follow the road to Cromwell, and keep going through the sheer cliffs of the Kawarau Gorge towards Gibbston, one of New Zealand's premier wine growing regions. See the historic Kawarau Bridge where you can bungy jump or relax and watch others take the plunge. Approaching Queenstown, the Remarkables mountain range comes into view as you arrive into the adventure capital of New Zealand.

Depart Queenstown today

Drop your rental car at the Queenstown airport today.

Private Transfer Queenstown Domestic Airport to Your Accommodation

On arrival you will be met by a private driver and delivered to your Queenstown accommodation.

SUGGESTED ACTIVITY - TSS Earnslaw Cruise and Walter Peak Gourmet BBQ Dinner

Enjoy a quintessential Kiwi experience, a delicious gourmet BBQ buffet meal, and a farm demonstration in a stunning lakeside setting. Take in the stunning views of Lake Wakatipu and its surroundings as you cruise across the lake to the historic Walter Peak high country farm aboard the TSS Earnslaw Steamship. Enjoy the ambiance of the heart of the stately homestead while your Colonel's Homestead Restaurant chef prepares a gourmet BBQ dinner. Your seasonal menu includes an extensive selection of local New Zealand produce, including succulent meats and a selection of delicious vegetables and salads. Complete your meal with your choice of delicious desserts, or New Zealand cheeses. After dinner, watch the farm dogs in action with a sheep-herding demonstration and say hello to the other farm animals. Finally, cruise home under the southern stars and enjoy the fresh night air as the lights of Queenstown draw ever closer.

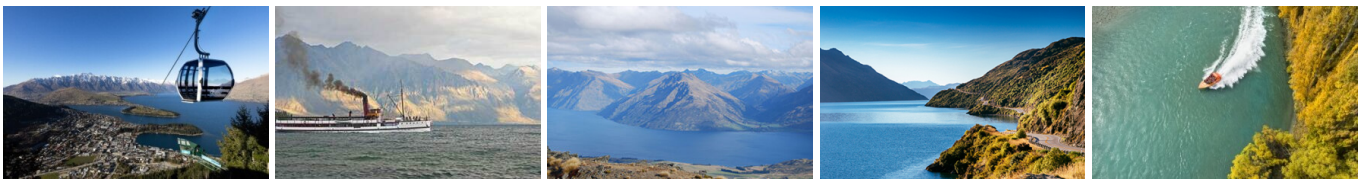
Your accommodation: Millennium Hotel Queenstown

Right in the heart of the action, the Millennium Hotel is just minutes from Queenstown's central shopping and entertainment district. Outdoor activities such as bungy jumping, white water rafting and jet boating are just some of the easily accessible activities nearby in New Zealand's adventure capital.

Meals included: Breakfast



Day 9



Explore Queenstown

Well-known as New Zealand's 'adventure capital', Queenstown is home to a range of adventures, from the world's first and most famous bungy jumps to jet boat thrills, white-water rafting, and skydiving. However, Queenstown offers far more than a fast-paced, action-packed holiday. Settled on the shores of beautiful Lake Wakatipu beneath a soaring panorama of the Remarkables Mountain Range, this alpine town is surrounded by many historic, gastronomic, and scenic wonders. Take a stroll through the beautiful lakefront parks and gardens, browse through market stalls on weekends, dine in wonderful al-fresco restaurants, or ride on the 100-year-old historic Steamship - TSS Earnslaw to Walter Peak Station. Take the Queenstown Gondola up to Bob's Peak and soak up the panoramic views of the magnificent lake and mountain ranges. And after all of that, if you do want the adrenaline rush, Queenstown is known for taking your pick from the Shotover Jet, Canyon Swing, Zipline, Luge, or Heli-hike.

SUGGESTED ACTIVITY - Gold Heritage: Skippers Canyon Tour with Nomad Safaris

An unforgettable 4WD adventure with Nomad Safaris into the historic Skippers Canyon. This half-day tour follows the dramatic Skippers Road, carved by hand into the cliffs of the Shotover River Valley. Enjoy breathtaking views as your guide leads you to historic landmarks, including the Skippers Suspension Bridge and the restored schoolhouse, offering a glimpse into the area's rich heritage. Recognized as one of the world's most scenic roads by the British Automobile Association, this thrilling journey it is important you read and understand the risks associated with this activity. For more information see [here](#).

Routeburn Track Briefing

Please check in at 13:45 on the day prior to your walk for a group pre-track briefing. The briefing is held at the Ultimate Hikes Centre, Ground Floor, The Station Building, Duke Street Entrance, Queenstown. At the briefing, you will have the opportunity to confirm your dietary, medical information and emergency contact details. You will be able to pick up any gear you need to borrow from us or purchase any last-minute items from our shop. The customer service staff will also give you an overview of what to expect while you are on track. If you cannot make the pre-track briefing, please contact Reservations on +64 3 450 1940 or info@ultimatehikes.co.nz as soon as possible.

Your accommodation: Millennium Hotel Queenstown

Right in the heart of the action, the Millennium Hotel is just minutes from Queenstown's central shopping and entertainment district. Outdoor activities such as bungy jumping, white water rafting and jet boating are just some of the easily accessible activities nearby in New Zealand's adventure capital.

Meals included: Breakfast



Day 10



Routeburn Track 3 Day/2 Night Guided Walk with Ultimate Hikes

The Routeburn Track traverses wild and scenic mountain country between the Hollyford and Dart Valleys at the base of New Zealand's Southern Alps. Since the 1880's the Routeburn Track has proved to be one of the most accessible and popular journeys into New Zealand's forests and mountains. The Routeburn Track passes through two national parks, Fiordland and Mount Aspiring, and is part of Te Wahipounamu, South West New Zealand World Heritage Area. The area is a haven for native birdlife: The Robin, Fantail, Parakeet, Bellbird, Yellowhead and watch out for the resident Kea at Routeburn Falls! The variety of landscapes will also astound you: Mountainous peaks, sheer rock faces, alpine basins, pristine lakes, cascading waterfalls, luxuriant forest, turquoise rivers and million-dollar views around every corner.

The Routeburn Track Guided Walk is a 3 day / 2 night Queenstown to Queenstown all-inclusive walk traversing New Zealand's Southern Alps. The package includes all transport, private or shared accommodation in custom built lodges, meals, snacks, backpacks and rain jackets and you will be led by expert Ultimate Hikes guides. It is important you read and understand the risks associated with this activity. For more information please [click here](#).

Queenstown to Mackenzie Lodge

The day begins early with a coach ride to the Divide, stopping in Te Anau for morning tea on the way. At the Divide, make sure you collect your lunch from the guides before setting off. The track begins with a steady climb up through Silver Beech forest to the turn off to Key Summit. Leave your pack at the turn off before climbing to the Summit for great views and a wetlands walk. Collect your pack, and it's a short walk down to Lake Howden for lunch. In the afternoon, the track gradually climbs to the 80m (240ft) Earland Falls. Stop for a break at the base pool. The track then traverses around the mountain side to the Orchard. Beyond, you'll climb for a short section before a steep descent to Mackenzie Lodge.

Your accommodation: Routeburn Track Lodges

The Routeburn Track lodges have been purposely designed and built and all lodges have drying rooms, flush toilets and hot showers complete with soap, shampoo and conditioner. The lodge kitchen treats you with a three course dinner and cooked breakfast. Accommodation is in a private room with queen or twin bedding or bunk bed rooms sleeping up to 4.

Meals included: Breakfast, Lunch, Dinner



Day 11



Lake Mackenzie to Routeburn Falls Lodge

The track starts just past Lake Mackenzie and rises up through ancient beech forest emerging out of the treeline for stunning views of the lake below. At the top of the zig zags is Ocean Peak Corner. On a clear day you'll have a full panorama of the Darran Mountains across the Hollyford Valley, to the distant Tasman Sea at Martin's Bay. Follow the track along the mountain face and ask your guides to point out the native flora, including mountain daisies, buttercups, gentians and edelweiss. After lunch at the Harris Saddle, if track and weather conditions allow, you can climb Conical Hill for a panoramic view of the surrounding peaks. The track continues around Lake Harris, before descending into the upper basins of the Routeburn Valley skirting the Routeburn Falls. Spend your final night at the aptly named Routeburn Falls Lodge. Today's hike will be 11 km (6.9 miles) and will last about 4-6 hours.

Your accommodation: Routeburn Track Lodges

The Routeburn Track lodges have been purposely designed and built and all lodges have drying rooms, flush toilets and hot showers complete with soap, shampoo and conditioner. The lodge kitchen treats you with a three course dinner and cooked breakfast. Accommodation is in a private room with queen or twin bedding or bunk bed rooms sleeping up to 4.

Meals included: Breakfast, Lunch, Dinner



Day 12



Routeburn Falls to Queenstown

The track descends from the lodge through Red Beech forest to the alpine pastures of the Routeburn Flats. Picnic beside the Routeburn river at Forge Flat. The track shadows the river through the beech forest to the Road End. Take the nature walk at the detour to read more about the native forest and listen for native birds in the valley. At Road End the coach will be waiting to take you back to Queenstown, stopping at the small town of Glenorchy for refreshments. Today's walk is 9km (5.7 miles) and will take between 3 to 4 hours.

Your accommodation: Millennium Hotel Queenstown

Right in the heart of the action, the Millennium Hotel is just minutes from Queenstown's central shopping and entertainment district. Outdoor activities such as bungy jumping, white water rafting and jet boating are just some of the easily accessible activities nearby in New Zealand's adventure capital.

Meals included: Breakfast, Lunch, Dinner



Day 13



Collect Rental Car

Choose a car to best suit your needs from our fantastic rental car range. From compact economy, hatchbacks to prestige SUVs.

Queenstown to Franz Josef Glacier via Wānaka

From Queenstown you'll cross the Crown Range, the highest sealed road in New Zealand to arrive in the Alpine town of Wānaka, gateway to Mt Aspiring National Park. Skirting the shores of both Lake Wanaka and Hawea, you will enter the small town of Makarora. Stop at Blue Pools for a 1-hour return walk through the native beech forest to a glacier-fed swimming hole. Continue on through the remote seaside settlement of Haast before heading up the wild West Coast highway you pass through ancient temperate rainforests while getting sneak peeks of the wild coast beaches occasionally. Paringa Salmon Farm is worth a stop to stretch your legs, feed the fish, and stop for lunch and refreshments. Keep heading North and be sure to enjoy the view of the ever-changing towering snowcapped Southern Alps Mountain Range. Fox Glacier welcomes you first, then comes your destination for the night Franz Josef township.

SUGGESTED ACTIVITY - Twin Glacier Scenic Helicopter Flight with The Helicopter Line

A spectacular scenic flight soaring over two of New Zealand's most famous glaciers, Fox and Franz Josef. Landing at the head of one and view the incredible sight of this frozen river as it winds its way through ancient carved valleys.

Your accommodation: Scenic Hotel Franz Josef Glacier

Only a breath away from the Franz Josef Glacier, Scenic Hotel is located in the heart of Franz Josef Village. Here you will find all of the amenities you would expect, as well as being close to the shops, restaurants and activities on offer in the beautiful Westland region.

Meals included: Breakfast



Day 14



Franz Josef to Greymouth Train Station

Head north along the mighty West Coast highway you pass through ancient temperate rainforests while getting sneak peeks of the wild coast beach occasionally. Whataroa is the next town where you can see one of the world's rarest birds, the Kōtuku - White Heron. The Kōtuku nest at the Waitangi Roto Nature Reserve, only accessible with a guided tour from October to March. The next town is Ross which is the site of an old gold mining settlement where the local information centre offers you the chance to pan for gold. Hokitika is a great place to explore craft and gift stores and head to the coast and take in the endless sea views. The Pounamu-Greenstone on offer in Hokitika is probably some of the best you will see in the country. Continue on to Greymouth, the largest town on the West Coast and the starting point for the next leg of your journey the TranzAlpine Scenic Train. Drop your rental car at the Greymouth Train Station depot located at the train station building before boarding your train to Christchurch.

Drop Rental Car at Greymouth Train Station depot today

This morning drive to the train station and leave your car parked. Remove all personal items including GPS or Kruse units and lock the car. Make sure it is full of fuel to avoid any charges. Hand the keys to the train station check in staff and tell them Europcar will be collecting. Europcar staff will collect the rental car later from the train station.

TranzAlpine Scenic Train: Greymouth to Christchurch

Considered one of the world's great train journeys, the TranzAlpine Scenic Train takes you from Greymouth to Christchurch. Travel across the South Island from the west to the east coast through Arthur's Pass National Park. From the comfort of your carriage see lush beech forest, deep river valleys and the spectacular peaks of the Southern Alps. Descend to the windswept Canterbury Plains before arriving in the city of Christchurch.

Shared Transfer from Christchurch Train Station to Christchurch CBD Accommodation with Christchurch Touring Company

On arrival at the Christchurch railway station, you will be met by a driver and transferred to your Christchurch accommodation.

Your accommodation: The George Hotel

The George is the essence of supreme comfort. The award-winning 5 star hotel is opposite Hagley Park and just a few minutes stroll from the Botanic Gardens. It also has an award-winning restaurant, 50 Bistro onsite.

Meals included: Breakfast



Day 15



Private Transfer from Christchurch Accommodation to Christchurch Airport with Christchurch Touring Company

A private transfer will collect you from your accommodation and transfer you to Christchurch Airport in time for your departing flight.

Farewell from Aotearoa-New Zealand

Bid farewell to New Zealand, taking with you unforgettable memories of its breathtaking landscapes and incredible adventures. In Maori, it is said mā te wā, which is not goodbye, it is see you soon!

Tour details

Departures:	Daily
Tour type:	Nationwide Self Drive
Starts:	Auckland
Finishes:	Christchurch
Tour length:	15
Accommodation:	Hotel 4 star
Car/transport type:	

Included activities

Includes	All breakfasts
Includes	Private train station transfers
Includes	Private airport transfers
Includes	Interislander ferry crossing
Includes	TranzAlpine Train from Greymouth to Christchurch
Includes	Routeburn Track Guided Walk with Ultimate Hikes
Includes	Private Tongariro Alpine Crossing with Adventure Outdoors

Accommodation summary

Day 1	SkyCity Hotel Auckland
Day 2	The Park Hotel Ruapehu
Day 3	The Park Hotel Ruapehu
Day 4	Bolton Hotel Wellington
Day 5	Bendamere House B&B
Day 6	The George Hotel
Day 7	Hermitage Hotel, Aoraki Wing Premium
Day 8	Millennium Hotel Queenstown
Day 9	Millennium Hotel Queenstown
Day 10	Routeburn Track Lodges
Day 11	Routeburn Track Lodges
Day 12	Millennium Hotel Queenstown
Day 13	Scenic Hotel Franz Josef Glacier
Day 14	The George Hotel